



SCANDINAVIAN DESIGN & QUALITY

*Autumn / Winter*

COLLECTION 2023





# *Essentially Scandinavian*

PORTRAYING SCANDINAVIAN DESIGN THRU QUALITY GARMENTS

SINCE 1995

N  
NIMBUS®  
- CPH -





TABLE OF CONTENTS

Essentially Scandinavian

PORTRAYING SCANDINAVIAN DESIGN THRU QUALITY GARMENTS  
SINCE 1995

T-SHIRTS

Montauk	10
Danbury	14

POLOSHIRTS

Harvard Classic	NEW SS23	20
Harvard V-neck	NEW SS23	24
Carlington		28
Yale		32
Clearwater		36

SHIRTS & OVERSHIRTS

Rochester	NEW SS23	42
Portland		48
Torrance		54
Kingston		60
Napa	NEW SS23	64

KNITWEAR

Beaufort		70
Brighton O-neck		74
Brighton V-neck		78
Brighton ¼ Zip	NEW STYLE	80
Phoenix		82
Ashbury		86
Richmond		90

SWEATSHIRTS & HOODIES

Williamsburg	NEW SS23	94
Brownsville		98
Cambridge		102
Eaton		106
Hampton		110
Newport	NEW SS23	114

VESTS & GILETS

Camden		120
Maine	NEW SS23	124
Hudson	NEW SS23	128
Vermont		132

CROSSOVER JACKETS

Crescent	NEW STYLE	138
Henderson		142
Bellington		146
Bleecker	NEW SS23	150
Davenport		154
Redmond		158
Huntington		162
Independence		166
Lindenwood	NEW SS23	170
Brookhaven		174
Duxbury		178
Richland		172
Seattle		186

INSULATED JACKETS

Telluride	NEW STYLE	192
Abington		196
Fairview		200
Kendrick		204
Whitestone		208
Sierra		214
Stillwater		218
Mapleton		222
Northdale		226

Size guide	230
Nimbus Academy	232
Sustainability	244
Quality control	252





## RECYCLED FABRIC

Developing and producing within the textile industry, as well as in many other industries, has an impact on our environment.

At Nimbus, we are continually working towards an enduring sustainable strategy, minimizing the consequences of our activities.

We are constantly striving to develop long-lasting products both in regards to quality as well as design, while at the same time sourcing materials and finding production methods that reduce our environmental footprints.





## T-shirts

A classic and comfortable t-shirt  
is the foundation of all wardrobes

---

MONTAUK | DANBURY





## THE ESSENTIAL TEE

All self-respecting clothing brands offer an everyday T-shirt. At Nimbus we call it Montauk. Made from the finest cotton, combined with a small amount of elastane to maintain its shape and to ensure freedom of movement. Montauk can be used alone or combined with a shirt, jacket or sweatshirt, the possibilities are endless - in short, a must have in any wardrobe.



T-SHIRTS

# MONTAUK

MEN



**Fabric** 95% combed organic cotton/ 5% elastane, single jersey  
**Colour** Black, Navy, White | **Weight** 200 g/m<sup>2</sup> | **Size** S - 4XL

OEKO-TEX® | OCS

Read more on page 244 - 251





## THE ESSENTIAL TEE

All self-respecting clothing brands offer an everyday T-shirt. At Nimbus we call it Montauk. Made from the finest cotton, combined with a small amount of elastane to maintain its shape and to ensure freedom of movement. Montauk can be used alone or combined with a shirt, jacket or sweatshirt, the possibilities are endless - in short, a must have in any wardrobe.

T-SHIRTS

# MONTAUK

WOMEN



**Fabric** 95% combed organic cotton/ 5% elastane, single jersey

**Colour** Black, Navy, White | **Weight** 200 g/m<sup>2</sup> | **Size** XS - 3XL

OEKO-TEX® | OCS

Read more on page 244 - 251





## THE PIQUE TEE

The pique T-shirt Danbury is a unique piece, which can be used for a variety of occasions. It's a perfectly fitted T-shirt, made from the comfortable cotton-elastane fabric we use for our popular Harvard polo. The fabric adds more shape, which prevents it from curling and makes it feels extremely comfortable against your body. Overall, Danbury gives a classic well-dressed look, and is therefore suitable as a substitute for a polo or a shirt.

T-SHIRTS

# DANBURY

MEN



**Fabric** 95% organic combed cotton/ 5% elastane

**Colour** Black, Navy, White | **Weight** 230 g/m<sup>2</sup> | **Size** S - 4XL

OEKO-TEX® | OCS

Read more on page 244 - 251





## THE PIQUE TEE

The pique T-shirt Danbury is a unique piece, which can be used for a variety of occasions. It's a perfectly fitted T-shirt, made from the comfortable cotton-elastane fabric we use for our popular Harvard polo. The fabric adds more shape, which prevents it from curling and makes it feels extremely comfortable against your body. Overall, Danbury gives a classic well-dressed look, and is therefore suitable as a substitute for a polo or a shirt.

T-SHIRTS

# DANBURY

WOMEN



**Fabric** 95% organic combed cotton/ 5% elastane

**Colour** Black, Navy, White | **Weight** 230 g/m<sup>2</sup> | **Size** XS - 3XL

OEKO-TEX® | OCS

Read more on page 244 - 251





## Poloshirts

Get a touch of class and elegance  
with our luxurious poloshirts

---

HARVARD CLASSIC | HARVARD V-NECK  
CARLINGTON | YALE | CLEARWATER





### STRETCH DELUXE POLO

The unique Harvard poloshirt is one of the most luxurious and detailed poloshirts on the market. It is unlike any other and yet it follows the classic codes. Made in a comfortable material blend, the stretchy fitting shapes stylishly at any time. Available in a classic version with buttoned placket or in a version with an elegant v-neck. The Harvard is a touch of understated originality that allows for the use of poloshirts in more well-dressed situations. Men's Harvard features a stylish shirt collar stand for enhanced elegance. Women's Harvard features a well-designed open sleeve for a more feminine look.



POLOSHIRTS

## HARVARD CLASSIC

MEN



NEW COLOUR SS23

**Fabric** 95% combed organic cotton / 5% elastane - All colours (except Gray Melange)

85% combed organic cotton / 10% viscose / 5% elastane - Grey Melange

**Colour** Black, Navy, White, Indigo, Sky Blue, Charcoal, Dark Navy, Olive, Grey Melange

**Weight** 230 g/m<sup>2</sup> | **Size** S - 4XL

OEKO-TEX® | OCS

Read more on page 244 - 251





### STRETCH DELUXE POLO

The unique Harvard poloshirt is one of the most luxurious and detailed poloshirts on the market. It is unlike any other and yet it follows the classic codes. Made in a comfortable material blend, the stretchy fitting shapes stylishly at any time. Available in a classic version with buttoned placket or in a version with an elegant v-neck. The Harvard is a touch of understated originality that allows for the use of poloshirts in more well-dressed situations. Men's Harvard features a stylish shirt collar stand for enhanced elegance. Women's Harvard features a well-designed open sleeve for a more feminine look.

POLOSHIRTS

## HARVARD CLASSIC

WOMEN

NEW SS23



**Fabric** 95% combed organic cotton/ 5% elastane

**Colour** Black, Dark Navy, White | **Weight** 230 g/m<sup>2</sup> | **Size** XS - 3XL

OEKO-TEX® | OCS

Read more on page 244 - 251





## STRETCH DELUXE POLO

The unique Harvard poloshirt is one of the most luxurious and detailed poloshirts on the market. It is unlike any other and yet it follows the classic codes. Made in a comfortable material blend, the stretchy fitting shapes stylishly at any time. Available in a classic version with buttoned placket or in a version with an elegant v-neck. The Harvard is a touch of understated originality that allows for the use of poloshirts in more well-dressed situations. Men's Harvard features a stylish shirt collar stand for enhanced elegance. Women's Harvard features a well-designed open sleeve for a more feminine look.



POLOSHIRTS

## HARVARD V-NECK

MEN



**Fabric** 95% combed organic cotton/ 5% elastane

**Colour** Black, White, Dark Navy | **Weight** 230 g/m<sup>2</sup> | **Size** S - 4XL

OEKO-TEX® | OCS

Read more on page 244 - 251





## STRETCH DELUXE POLO

The unique Harvard poloshirt is one of the most luxurious and detailed poloshirts on the market. It is unlike any other and yet it follows the classic codes. Made in a comfortable material blend, the stretchy fitting shapes stylishly at any time. Available in a classic version with buttoned placket or in a version with an elegant v-neck. The Harvard is a touch of understated originality that allows for the use of poloshirts in more well-dressed situations. Men's Harvard features a stylish shirt collar stand for enhanced elegance. Women's Harvard features a well-designed open sleeve for a more feminine look.

## POLOSHIRTS

# HARVARD V-NECK

## WOMEN



NEW COLOUR SS23

**Fabric** 95% combed organic cotton / 5% elastane - All colours (except Gray Melange)

85% combed organic cotton / 10% viscose / 5% elastane - Grey Melange

**Colour** Black, Navy, White, Indigo, Sky Blue, Charcoal, Dark Navy, Olive, Grey Melange

**Weight** 230 g/m<sup>2</sup> | **Size** XS - 3XL

OEKO-TEX® | OCS

Read more on page 244 - 251





### DELUXE LONGSLEEVE POLO

The polo never goes out of fashion, and we have complemented our broad range with the long-sleeved version. The long sleeves give it a more distinguished look, perfect for situations where it is suitable, and it can also be used as a more casual counterpart to the shirt. Produced in comfortable cotton-lycra, Carlington has many elegant details that give it a touch of exclusivity, such as button-down and cuff sleeves with button fastening.



POLOSHIRTS

## CARLINGTON

MEN



**Fabric** 95% combed organic cotton/ 5% elastane

**Colour** Black, Navy, White, Olive, Charcoal, Dark Navy | **Weight** 230 g/m<sup>2</sup> | **Size** S - 4XL

OEKO-TEX® | OCS

Read more on page 244 - 251





### DELUXE LONGSLEEVE POLO

The polo never goes out of fashion, and we have complemented our broad range with the long-sleeved version. The long sleeves give it a more distinguished look, perfect for situations where it is suitable, and it can also be used as a more casual counterpart to the shirt. Produced in comfortable cotton-lycra, Carlington has many elegant details that give it a touch of exclusivity, such as button-down and cuff sleeves with button fastening.



POLOSHIRTS

## CARLINGTON

WOMEN



**Fabric** 95% combed organic cotton/ 5% elastane

**Colour** Black, Navy, White, Olive, Charcoal, Dark Navy | **Weight** 230 g/m<sup>2</sup> | **Size** XS - 3XL

OEKO-TEX® | OCS

Read more on page 244 - 251





## THE LUXURIOUS CLASSIC POLO

The luxurious Yale polo is a classic two thread piqué made from fine combed organic cotton. It's unique cut ensures a perfect fit, and with the placket, forwarded double stitches at the shoulders and a slightly stiff collar, Yale appeals for a traditional and stylish appearance. The characteristic coloured decoration details at the neck tape and at the bottom slits, add contrast to all of the classic colours. Yale is inspired by the timeless Nordic trends, where dressing both stylish and casual is a must for any admirer of Scandinavian Apparel.

POLOSHIRTS

# YALE

MEN



**Fabric** 100% organic combed cotton. 40/2, two thread piqué  
**Colour** Black, Navy, White | **Weight** 250 g/m<sup>2</sup> | **Size** S - 4XL

OEKO-TEX® | OCS

Read more on page 244 - 251





## THE LUXURIOUS CLASSIC POLO

The luxurious Yale polo is a classic two thread piqué made from fine combed organic cotton. It's unique cut ensures a perfect fit, and with the placket, forwarded double stitches at the shoulders and a slightly stiff collar, Yale appeals for a traditional and stylish appearance. The characteristic coloured decoration details at the neck tape and at the bottom slits, add contrast to all of the classic colours. Yale is inspired by the timeless Nordic trends, where dressing both stylish and casual is a must for any admirer of Scandinavian Apparel.

POLOSHIRTS

YALE

WOMEN



**Fabric** 100% organic combed cotton. 40/2, two thread piqué

**Colour** Black, Navy, White | **Weight** 250 g/m<sup>2</sup> | **Size** XS - 3XL

OEKO-TEX® | OCS

Read more on page 244 - 251





#### QUICK DRY PERFORMANCE POLO

This classic fine gauged polyester poloshirt is soft and crisp to the touch, designed for its semi-tech qualities and great comfort. Clearwater is wrinkle-free and comes in a nice fit that will keep you comfortable throughout the entire day. Its wicking and quick-drying features make this poloshirt ideal for everyday use in more demanding environments.

POLOSHIRTS

## CLEARWATER

MEN



**Fabric** 100% polyester pique

**Colour** Black, Navy, White | **Weight** 170 g/m<sup>2</sup> | **Size** S - 4XL

OEKO-TEX®

Read more on page 244 - 251





#### QUICK DRY PERFORMANCE POLO

This classic fine gauged polyester poloshirt is soft and crisp to the touch, designed for its semi-tech qualities and great comfort. Clearwater is wrinkle-free and comes in a nice fit, that will keep you comfortable throughout the entire day. Its wicking and quick-drying features makes this poloshirt ideal for everyday use in more demanding environments.

POLOSHIRTS

## CLEARWATER

WOMEN



**Fabric** 100% polyester pique

**Colour** Black, Navy, White | **Weight** 170 g/m<sup>2</sup> | **Size** XS - 3XL

OEKO-TEX®

Read more on page 244 - 251





## Shirts *and* Overshirts

Premium collection of timeless  
and well-designed shirts

---

ROCHESTER | PORTLAND | TORRANCE  
KINGSTON | NAPA





## CLASSIC OXFORD SHIRT

Nimbus' version of the classic long sleeved Oxford shirt, crafted in 100% fine combed cotton. Rochester features traditional characteristics such as the button down collar, the locker-loop, the Ivy league related third collar button, functional cuffs, a gently curved hem and stylish contrast details. The classic colours embrace the history of this casual and well fitted wardrobe staple that adds a sophisticated and preppy touch to your look. All combined with Nimbus attention to details and a variety of creative tailoring features, as expected on a piece of Scandinavian Apparel.

SHIRTS & OVERSHIRTS

## ROCHESTER

MEN

MODERN FIT



NEW COLOUR SS23

**Fabric** 100% combed and mercerized cotton in Oxford Fabric. Garment washed

**Colour** Light Blue, White, Ocean Blue | **Weight** 170 g/m<sup>2</sup> | **Size** S - 4XL

OEKO-TEX®

Read more on page 244 - 251





## CLASSIC OXFORD SHIRT

Rochester Slim Fit is the new fitted version of our successful Rochester shirt. Rochester Slim Fit features traditional characteristics such as the button-down collar, the locker loop, the Ivy league related third collar button, functional cuffs, a gently curved hem and stylish contrast details. Rochester Slim Fit is for those that want the shirt to be worn tighter to the body, still with well-fitting design, and with the same focus on the classical virtues of an Oxford shirt has.

SHIRTS & OVERSHIRTS

## ROCHESTER

MEN

SLIM FIT



NEW COLOUR SS23

**Fabric** 100% combed and mercerized cotton in Oxford Fabric. Garment washed

**Colour** Light Blue, White, Ocean Blue | **Weight** 170 g/m<sup>2</sup> | **Size** Light Blue S - 4XL,  
White S - 3XL, Ocean Blue S - 2XL

OEKO-TEX®

Read more on page 244 - 251





## CLASSIC OXFORD SHIRT

Nimbus' version of the classic long sleeved Oxford shirt, crafted in 100% fine combed cotton. Rochester features traditional characteristics such as the button down collar, the locker-loop, the Ivy league related third collar button, functional cuffs, a gently curved hem and stylish contrast details. The classic colours embrace the history of this casual and well fitted wardrobe staple that adds a sophisticated and preppy touch to your look. All combined with Nimbus attention to details and a variety of creative tailoring features, as expected on a piece of Scandinavian Apparel.

SHIRTS & OVERSHIRTS

## ROCHESTER

WOMEN



**Fabric** 100% combed and mercerized cotton in Oxford Fabric. Garment washed

**Colour** Light Blue, White, Ocean Blue | **Weight** 170 g/m<sup>2</sup> | **Size** XS - 3XL

OEKO-TEX®

Read more on page 244 - 251





### SUPER NON-IRON BUSINESS SHIRT

Designed to make you stay sharp throughout the day, this classic non-iron business shirt is crafted from advanced cotton, providing a comfortable fit in a contemporary design. This elegant shirt features a versatile design with cutaway collar and single cuffs, and it has been perfected with a unique finish to ensure that when hung up to dry after washing, it remains remarkably crease free.

SHIRTS & OVERSHIRTS

## PORTLAND

MEN

MODERN FIT



**Fabric** 100% SPANO cotton | **Colour** Black, White, Light Blue

**Weight** 130 g/m<sup>2</sup> | **Size** 37/38 - 49/50 (S - 4XL)

OEKO-TEX® | SPANO

Read more on page 244 - 251





#### SUPER NON-IRON BUSINESS SHIRT

Designed to make you stay sharp throughout the day, this classic non-iron business shirt is crafted from advanced cotton, providing a comfortable fit in a contemporary design. This elegant shirt features a versatile design with cutaway collar and single cuffs, and it has been perfected with a unique finish to ensure that when hung up to dry after washing, it remains remarkably crease free.

SHIRTS & OVERSHIRTS

## PORTLAND

MEN

SLIM FIT



**Fabric** 100% SPANO cotton | **Colour** Black, White, Light Blue

**Weight** 130 g/m<sup>2</sup> | **Size** 37/38 - 45/46 (S - 2XL)

OEKO-TEX® | SPANO

Read more on page 244 - 251





### SUPER NON-IRON BUSINESS SHIRT

Designed to make you stay sharp throughout the day, this classic non-iron business shirt is crafted from advanced cotton, providing a comfortable fit in a contemporary design. This elegant shirt features a versatile design with cutaway collar and single cuffs, and it has been perfected with a unique finish to ensure that when hung up to dry after washing, it remains remarkably crease free.

SHIRTS & OVERSHIRTS

## PORTLAND

WOMEN



**Fabric** 100% SPANO cotton | **Colour** Black, White, Light Blue

**Weight** 130 g/m<sup>2</sup> | **Size** XS - 3XL

OEKO-TEX® | SPANO

Read more on page 244 - 251





## RAW AND STYLISH DENIM SHIRT

Torrance is our take on the classic denim shirt, which has had a comeback the last few years. We have toned down the roughness and added more elegance and style, e.g. by adding a button-down collar in the male version and shaded dark blue buttons and a feminine cut in the female version. Torrance comes in a deep beautiful indigo blue, the fabric has a bit of stretch and the design is the classic Nimbus Slim Fit.

SHIRTS & OVERSHIRTS

## TORRANCE

MEN

MODERN FIT



**Fabric** 98% cotton/ 2% elastane. Garment washed

**Colour** Indigo Blue | **Weight** 175 g/m<sup>2</sup> | **Size** S - 3XL

OEKO-TEX®

Read more on page 244 - 251





## RAW AND STYLISH DENIM SHIRT

Torrance is our take on the classic denim shirt, which has had a comeback the last few years. We have toned down the roughness and added more elegance and style, e.g. by adding a button-down collar in the male version and shaded dark blue buttons and a feminine cut in the female version. Torrance comes in a deep beautiful indigo blue, the fabric has a bit of stretch and the design is the classic Nimbus Slim Fit.

SHIRTS & OVERSHIRTS

## TORRANCE

MEN

SLIM FIT



**Fabric** 98% cotton/ 2% elastane. Garment washed

**Colour** Indigo Blue | **Weight** 175 g/m<sup>2</sup> | **Size** S - 3XL

OEKO-TEX®

Read more on page 244 - 251





### RAW AND STYLISH DENIM SHIRT

Torrance is our take on the classic denim shirt, which has had a comeback the last few years. We have toned down the roughness and added more elegance and style, e.g. by adding a button-down collar in the male version and shaded dark blue buttons and a feminine cut in the female version. Torrance comes in a deep beautiful indigo blue, the fabric has a bit of stretch and the design is the classic Nimbus Slim Fit.

SHIRTS & OVERSHIRTS

## TORRANCE

WOMEN



**Fabric** 98% cotton/ 2% elastane. Garment washed

**Colour** Indigo Blue | **Weight** 175 g/m<sup>2</sup> | **Size** XS - 3XL

OEKO-TEX®

Read more on page 244 - 251





### STRETCH DELUXE PIQUÉ SHIRT

Tailored from a luxurious combed cotton-blend, the fashionable organic Kingston pique shirt is both stylish and comfortable enough as your casual alternative to a dressed shirt. Kingston goes perfectly with all outfits, but pairing it casually with chinos and trainers will result in extra style points.

SHIRTS & OVERSHIRTS

# KINGSTON

MEN



**Fabric** 95% organic cotton/ 5% elastane

**Colour** White, Black | **Weight** 230 g/m<sup>2</sup> | **Size** S - 3XL

OEKO-TEX® | OCS

Read more on page 244 - 251





### STRETCH DELUXE PIQUÉ SHIRT

Tailored from a luxurious combed cotton-blend, the fashionable organic Kingston pique shirt is both stylish and comfortable enough as your casual alternative to a dressed shirt. Kingston goes perfectly with all outfits, but pairing it casually with chinos and trainers will result in extra style points.

SHIRTS & OVERSHIRTS

# KINGSTON

WOMEN



**Fabric** 95% organic cotton/ 5% elastane

**Colour** White, Black | **Weight** 230 g/m<sup>2</sup> | **Size** XS - 3XL

OEKO-TEX® | OCS

Read more on page 244 - 251





## VERSATILE OVERSHIRT

Made from 100% Cotton canvas, the cool Napa overshirt is a both versatile and minimalistic piece of garment. It is ideal thrown over a T-shirt when the summer nights draw in and just as good for layering up and worn between a sweater and an overcoat to keep out the autumn chill.

SHIRTS & OVERSHIRTS

# NAPA

UNISEX

NEW SS23



**Fabric** 100% Cotton Canvas

**Colour** Black, Light Olive | **Weight** 220 g/m<sup>2</sup> | **Size** XS - 3XL





### VERSATILE OVERSHIRT

Made from 100% Cotton canvas, the cool Napa overshirt is a both versatile and minimalistic piece of garment. It is ideal thrown over a T-shirt when the summer nights draw in and just as good for layering up and worn between a sweater and an overcoat to keep out the autumn chill.

SHIRTS & OVERSHIRTS

# NAPA

UNISEX

NEW SS23



**Fabric** 100% Cotton Canvas

**Colour** Black, Light Olive | **Weight** 220 g/m<sup>2</sup> | **Size** XS - 3XL





## Knitwear

Designed with quality yarns  
for comfortability and softness

---

BEAUFORT | BRIGHTON O-NECK  
BRIGHTON V-NECK | BRIGHTON ¼ ZIP  
PHOENIX | ASHBURY | RICHMOND





## EXTRAFINE MERINO KNIT

A classic wool knit is a timeless key piece in any wardrobe. Extra-fine merino wool, from Italian Zegna Baruffa, makes our exclusive knit luxuriously soft, lightweight and breathable. Beaufort is the perfect layering option for all year round and will add sophistication to any outfit.

KNITWEAR

## BEAUFORT

MEN



SHAPE RETENTION

**Fabric** 100% Merino wool (extra fine - 19,5 micron)

**Colour** Black, Navy, Grey Melange | **Weight** 257 g/m<sup>2</sup> | **Size** S - 3XL

ZEGNA BARUFFA

Read more on page 244 - 251





### EXTRAFINE MERINO KNIT

A classic wool knit is a timeless key piece in any wardrobe. Extra-fine merino wool, from Italian Zegna Baruffa, makes our exclusive knit luxuriously soft, lightweight and breathable. Beaufort is the perfect layering option for all year round and will add sophistication to any outfit.

KNITWEAR

## BEAUFORT

WOMEN



SHAPE RETENTION

**Fabric** 100% Merino wool (extra fine - 19,5 micron)

**Colour** Black, Navy, Grey Melange | **Weight** 257 g/m<sup>2</sup> | **Size** XS - 2XL

ZEGNA BARUFFA

Read more on page 244 - 251





### ELEGANT ROUND NECK

The elegant Brighton knit will keep you well-dressed no matter the occasion and it is perfect for both casual and more formal look. Wear it alone or over a shirt for a timeless trans-seasonal layer. This knit features a modern fit, a crew neckline and is made in fine-gauge premium cotton/nylon yarns for a more refined style, providing soft comfort and excellent shape-retention. Mens version features stylish saddle sleeves and ladies version a tubular hem with a feminine slit.

KNITWEAR

## BRIGHTON O-NECK

MEN



**Fabric** 82% organic cotton/ 18% polyamide, fine gauge

**Colour** Black, Navy, Grey Melange, Olive Melange | **Weight** 190 g/m<sup>2</sup> | **Size** S - 4XL

OCS

Read more on page 244 - 251





### ELEGANT ROUND NECK

The elegant Brighton knit will keep you well-dressed no matter the occasion and it is perfect for both casual and more formal look. Wear it alone or over a shirt for a timeless trans-seasonal layer. This knit features a modern fit, a crew neckline and is made in fine-gauge premium cotton/nylon yarns for a more refined style, providing soft comfort and excellent shape-retention. Mens version features stylish saddle sleeves and ladies version a tubular hem with a feminine slit.

KNITWEAR

## BRIGHTON O-NECK

WOMEN



**Fabric** 82% organic cotton/ 18% polyamide, fine gauge

**Colour** Black, Navy, Grey Melange, Olive Melange | **Weight** 190 g/m<sup>2</sup> | **Size** XS - 3XL

OCS

Read more on page 244 - 251





### ELEGANT V-NECK

The elegant Brighton knit will keep you well-dressed no matter the occasion, and it is perfect for both a casual and more formal look. Wear it alone or over a shirt for a timeless trans-seasonal layer. This knit features a modern fit, a v-shaped neckline and is made in fine-gauge premium cotton/nylon yarns for a more refined style, providing soft comfort and excellent shape-retention.

KNITWEAR

## BRIGHTON V-NECK

MEN



**Fabric** 82% organic cotton/ 18% polyamide, fine gauge

**Colour** Black, Navy, Grey Melange, Olive Melange | **Weight** 190 g/m<sup>2</sup> | **Size** S - 4XL

OCS

Read more on page 244 - 251





### ELEGANT ¼ ZIP

The elegant Brighton ¼ zip knit will keep you well-dressed no matter the occasion, and it is perfect for both a casual and more formal look. Wear it alone or over a shirt as a timeless trans-seasonal layer.

This knit features a modern fit, a ¼-zip funnel neck and is made in fine-gauge premium organic cotton and nylon yarns for a more refined style, providing soft comfort and excellent shape-retention.

KNITWEAR

## BRIGHTON ¼ ZIP

MEN

NEW AW23



**Fabric** 82% organic cotton/ 18% polyamide, fine gauge

**Colour** Black, Navy, Grey Melange, Olive Melange | **Weight** 190 g/m<sup>2</sup> | **Size** S - 4XL

OCS

Read more on page 244 - 251





### LUXURIOUS MERINO BLEND CARDIGAN

The Phoenix cardigan is a musthave for cooler days. Spun in a super fine luxurious merino blend and detailed with fully fashioned finish. The feminine round neck, set in sleeves and elegant buttons for women, and the two-way zipper, saddle sleeve shoulders and a more sturdy collar for men make this cardigan the perfect layering piece for both a casual and a formal look.

KNITWEAR

## PHOENIX

MEN



**Fabric** 50% merino wool, Biella Yarn/ 50% anti-peeling acrylic

**Colour** Black, Navy, Grey melange | **Weight** 155 g/m<sup>2</sup> | **Size** S - 4XL

BIELLA YARN

Read more on page 244 - 251





### LUXURIOUS MERINO BLEND CARDIGAN

The Phoenix cardigan is a musthave for cooler days. Spun in a super fine luxurious merino blend and detailed with fully fashioned finish. The feminine round neck, set in sleeves and elegant buttons for women, and the two-way zipper, saddle sleeve shoulders and a more sturdy collar for men make this cardigan the perfect layering piece for both a casual and a formal look.

KNITWEAR

## PHOENIX

WOMEN



**Fabric** 50% merino wool, Biella Yarn/ 50% anti-peeling acrylic

**Colour** Black, Navy, Grey melange | **Weight** 155 g/m<sup>2</sup> | **Size** XS - 3XL

BIELLA YARN

Read more on page 244 - 251





### CLASSY LUXURY MERINO BLEND

No matter the occasion, the Ashbury pullover in a super fine luxurious merino blend, makes a great addition to any wardrobe. Detailed with an elegant v-neck, fully fashioned finish and set in sleeves, this soft and comfortable classic pullover is a safe choice to update your look regardless of season.

KNITWEAR

## ASHBURY

MEN



**Fabric** 50% merino wool, Biella Yarn/ 50% anti-peeling acrylic

**Colour** Black, Navy, Grey Melange | **Weight** 155 g/m<sup>2</sup> | **Size** S - 4XL

BIELLA YARN

Read more on page 244 - 251





### CLASSY LUXURY MERINO BLEND

No matter the occasion, the Ashbury pullover in a super fine luxurious merino blend, makes a great addition to any wardrobe. Detailed with an elegant v-neck, fully fashioned finish and set in sleeves, this soft and comfortable classic pullover is a safe choice to update your look regardless of season.

KNITWEAR

## ASHBURY

WOMEN



**Fabric** 50% merino wool, Biella Yarn/ 50% anti-peeling acrylic

**Colour** Black, Navy, Grey Melange | **Weight** 155 g/m<sup>2</sup> | **Size** XS - 3XL

BIELLA YARN

Read more on page 244 - 251





### ELEGANT MERINO BLEND

This fashionable knit features highly modern design details, such as the popular O-neck, the saddle sleeve shoulders and fully fashioned finish. The super fine luxurious merino blend makes it a warm and timeless wardrobe essential. Perfect for layering, yet sharp enough to wear on its own.

KNITWEAR

## RICHMOND

MEN



**Fabric** 50% merino wool, Biella Yarn/ 50% anti-peeling acrylic

**Colour** Black, Navy, Grey Melange | **Weight** 155 g/m<sup>2</sup> | **Size** S - 4XL

BIELLA YARN

Read more on page 244 - 251



A black and white photograph of a man with curly hair and a beard, looking down. He is wearing a light-colored zip-up hoodie over a collared shirt. The background is a blurred outdoor setting with a building and some foliage.

## Sweatshirts *and* Hoodies

From casual to formal with our  
iconic collection of sweatshirts

---

WILLIAMSBURG | BROWNSVILLE | CAMBRIDGE  
EATON | HAMPTON | NEWPORT





### STYLISH HOODED SWEAT

This desirable modern hooded sweatshirt, in a comfy organic cotton-rich blend, is stylish enough for work and fashionable enough to wear around town. "Style" has been a key word for our design team, resulting in eye-catching parts, such as rugged drawstrings, leather details, the trendy signature neck loop and YKK zipper. The brushed fleecy lining and the short-shave treatment makes the luxurious feeling last forever.

SWEATSHIRTS & HOODIES

WILLIAMSBURG

MEN



NEW COLOUR SS23

**Fabric** 70% combed long stabled fiber organic cotton/ 30% polyester, double dyed

**Rib** 95% cotton/ 5% elastane | **Colour** Black, Navy, Grey Melange, Olive, Indigo

**Weight** 310 g/m<sup>2</sup> | **Size** Black, Navy and Grey Melange S - 4XL. Indigo and Olive S - 3XL

OEKO-TEX® | OCS

Read more on page 244 - 251





### STYLISH HOODED SWEAT

This desirable modern hooded sweatshirt, in a comfy organic cotton-rich blend, is stylish enough for work and fashionable enough to wear around town. "Style" has been a key word for our design team, resulting in eye-catching parts, such as rugged drawstrings, leather details, the trendy signature neck loop and YKK zipper. The brushed fleecy lining and the short-shave treatment makes the luxurious feeling last forever.

SWEATSHIRTS & HOODIES

WILLIAMSBURG

WOMEN



NEW COLOUR SS23

**Fabric** 70% combed long stabled fiber organic cotton/ 30% polyester, double dyed

**Rib** 95% cotton/ 5% elastane | **Colour** Black, Navy, Grey Melange, Olive, Indigo

**Weight** 310 g/m<sup>2</sup> | **Size** Black, Navy and Grey Melange XS - 3XL. Indigo and Olive XS - 2XL

OEKO-TEX® | OCS

Read more on page 244 - 251





## FASHIONABLE HOODED SWEAT

This modest yet fashionable luxury hoodie, is made in a comfy organic cotton-rich blend. The understated design with rugged drawstrings, makes it wearable at multiple occasion and the elegant detailing, such as the double layer hood, allows for pairing with more formal wear. The brushed fleecy lining and the short-shave treatment will make the luxurious feeling last forever.

SWEATSHIRTS & HOODIES

# BROWNSVILLE

MEN



**Fabric** 70% combed long stabled fiber organic cotton/ 30% polyester, double dyed.

**Rib** 95% cotton/ 5% elastane | **Colour** Black, Navy, Grey Melange

**Weight** 310 g/m<sup>2</sup> | **Size** S - 4XL

OEKO-TEX® | OCS

Read more on page 244 -251





### FASHIONABLE HOODED SWEAT

This modest yet fashionable luxury hoodie, is made in a comfy organic cotton-rich blend. The understated design with rugged drawstrings, makes it wearable at multiple occasion and the elegant detailing, such as the double layer hood, allows for pairing with more formal wear. The brushed fleecy lining and the short-shave treatment will make the luxurious feeling last forever.

SWEATSHIRTS & HOODIES

## BROWNSVILLE

WOMEN



**Fabric** 70% combed long stabled fiber organic cotton/ 30% polyester, double dyed

**Rib** 95% cotton/ 5% elastane | **Colour** Black, Navy, Grey Melange

**Weight** 310 g/m<sup>2</sup> | **Size** XS–3XL

OEKO-TEX® | OCS

Read more on page 244 -251





## FASHIONABLE TRAINER

This modest yet fashionable luxury full zip is made in a comfy organic cotton-rich blend. The understated design with fashionable and elegant detailing makes it wearable at multiple occasions and allows for pairing with more formal wear. The brushed fleecy lining and the short-shave treatment will make the luxurious feeling last forever.

SWEATSHIRTS & HOODIES

## CAMBRIDGE

MEN



**Fabric** 70% combed long stabled fiber organic cotton/ 30% polyester, double dyed

**Rib** 95% cotton/ 5% elastane | **Colour** Black, Navy, Grey Melange

**Weight** 310 g/m<sup>2</sup> | **Size** S - 4XL

OEKO-TEX® | OCS

Read more on page 244 - 251





## FASHIONABLE TRAINER

This modest yet fashionable luxury full zip is made in a comfy organic cotton-rich blend. The understated design with fashionable and elegant detailing makes it wearable at multiple occasions and allows for pairing with more formal wear. The brushed fleecy lining and the short-shave treatment will make the luxurious feeling last forever.

SWEATSHIRTS & HOODIES

## CAMBRIDGE

WOMEN



**Fabric** 70% combed long stabled fiber organic cotton/ 30% polyester, double dyed

**Rib** 95% cotton/ 5% elastane | **Colour** Black, Navy, Grey Melange

**Weight** 310 g/m<sup>2</sup> | **Size** XS - 3XL

OEKO-TEX® | OCS

Read more on page 244 - 251





## PREMIUM DOUBLE-FACED SWEATSHIRT

Eaton is a refined bonded double-face cardigan that leaves you with an experience of luxury and extreme comfort. This premium and timeless classic not only layers well through all seasons, it also looks elegant when dressed up with a more formal shirt or polo underneath. Besides the unquestionable quality, it's the simplicity that makes this cardigan another premium piece in our collection of Sweatshirts & Hoodies.

SWEATSHIRTS & HOODIES

# EATON

MEN



**Fabric** 71% organic cotton/ 22% polyester/ 7% elastane  
**Colour** Black, Navy | **Weight** 320 g/m<sup>2</sup> | **Size** S - 4XL

OEKO-TEX® | OCS

Read more on page 244 - 251





### PREMIUM DOUBLE-FACED SWEATSHIRT

Eaton is a refined bonded double-face cardigan that leaves you with an experience of luxury and extreme comfort. This premium and timeless classic not only layers well through all seasons, it also looks elegant when dressed up with a more formal shirt or polo underneath. Besides the unquestionable quality, it's the simplicity that makes this cardigan another premium piece in our collection of Sweatshirts & Hoodies.

SWEATSHIRTS & HOODIES

# EATON

WOMEN



**Fabric** 71% organic cotton/ 22% polyester/ 7% elastane

**Colour** Black, Navy | **Weight** 320 g/m<sup>2</sup> | **Size** XS - 3XL

OEKO-TEX® | OCS

Read more on page 244 - 251





#### PREMIUM DOUBLE-FACED HOODIE

The character of this premium bonded double-face hoodie is unparalleled. Hampton not only feels good to wear, it also layers well and due to the clean and elegant design it goes along with any stylish outfit you may choose. Besides the unquestionable quality, it's the simplicity that makes this hoodie a premium piece in our collection of Sweatshirts & Hoodies. Hampton is a very suitable alternative to a knitted sweater in a formal environment.

SWEATSHIRTS & HOODIES

## HAMPTON

MEN



**Fabric** 71% organic cotton/ 22% polyester/ 7% elastane  
**Colour** Black, Navy | **Weight** 320 g/m<sup>2</sup> | **Size** S - 4XL

OEKO-TEX® | OCS

Read more on page 244 - 251





### PREMIUM DOUBLE-FACED HOODIE

The character of this premium bonded double-face hoodie is unparalleled. Hampton not only feels good to wear, it also layers well and due to the clean and elegant design it goes along with any stylish outfit you may choose. Besides the unquestionable quality, it's the simplicity that makes this hoodie a premium piece in our collection of Sweatshirts & Hoodies. Hampton is a very suitable alternative to a knitted sweater in a formal environment.

SWEATSHIRTS & HOODIES

## HAMPTON

WOMEN



**Fabric** 71% organic cotton/ 22% polyester/ 7% elastane  
**Colour** Black, Navy | **Weight** 320 g/m<sup>2</sup> | **Size** XS - 3XL

OEKO-TEX® | OCS

Read more on page 244 - 251





LUXURY LIGHTWEIGHT CREWNECK

The luxurious lightweight crewneck Newport, is a loungy but still elegant fashion statement that adds comfort and uniqueness to whatever look you might choose. This classic sweatshirt is a great go-to when you are heading out for a casual day, but still want to look well dressed, edgy and sharp. Women's version features a more classy and feminine neck detail.

SWEATSHIRTS & HOODIES

NEWPORT

MEN



NEW COLOUR SS23

**Fabric** 100% organic cotton, Olive, Black and Navy.  
90% organic cotton/ 10% viscose, Grey Melange  
**Colour** Black, Navy, Olive, Grey Melange | **Weight** 300 g/m<sup>2</sup> | **Size** S - 4XL

OEKO-TEX® | OCS

Read more on page 244 -251





LUXURY LIGHTWEIGHT CREWNECK

The luxurious lightweight crewneck Newport, is a loungy but still elegant fashion statement that adds comfort and uniqueness to whatever look you might choose. This classic sweatshirt is a great go-to when you are heading out for a casual day, but still want to look well dressed, edgy and sharp. Women's version features a more classy and feminine neck detail.

SWEATSHIRTS & HOODIES

NEWPORT

WOMEN



NEW COLOUR SS23

**Fabric** 100% organic cotton, Olive, Black and Navy.  
90% organic cotton/ 10% viscose, Grey Melange  
**Colour** Black, Navy, Olive, Grey Melange | **Weight** 300 g/m<sup>2</sup> | **Size** XS - 3XL

OEKO-TEX® | OCS

Read more on page 244 -251





## Vests *and* Gilets

Add a stylish dimension to your  
look with our bodywarmers

---

CAMDEN | MAINE  
HUDSON | VERMONT



VESTS & GILETS

CAMDEN

MEN



DIAMOND QUILTED GILET

The Camden gilet is the ultimate layering piece. A light padded and quilted gilet inspired by the attire of country living, added a touch of urban tranquility and a dash of business perfection. Featuring elegant details such as a medium high neck collar with comfortable knit, inner pocket, metal zip and two utility pockets. All combined with Nimbus fashionable leather details added to the authentic quilted look, transforms this gilet into a suitable warm keeping piece for those who commute light weighted, or for those who prefer a little extra underneath a jacket.



**Outer fabric** 100% nylon, diamond quilted | **Lining** 100% polyester

**Padding** 100% polyester | **Data** Water repellency finish - Bionic Finish® ECO

**Colour** Midnight Blue | **Weight** Shell: 60 g/m². Lining: 60-65 g/m² | **Size** S - 4XL

BIONIC FINISH® ECO

Read more on page 244 -251



VESTS & GILETS

CAMDEN

WOMEN



DIAMOND QUILTED GILET

The Camden gilet is the ultimate layering piece. A light padded and quilted gilet inspired by the attire of country living, added a touch of urban tranquility and a dash of business perfection. Featuring elegant details such as a medium high neck collar with comfortable knit, inner pocket, metal zip and two utility pockets. All combined with Nimbus fashionable leather details added to the authentic quilted look, transforms this gilet into a suitable warm keeping piece for those who commute light weighted, or for those who prefer a little extra underneath a jacket.



**Outer fabric** 100% nylon, diamond quilted | **Lining** 100% polyester

**Padding** 100% polyester | **Data** Water repellency finish - Bionic Finish® ECO

**Colour** Midnight Blue | **Weight** Shell: 60 g/m². Lining: 60-65 g/m² | **Size** XS - 3XL

BIONIC FINISH® ECO

Read more on page 244 -251





VESTS & GILETS

MAINE  
MEN

NEW SS23



PLEASANTLY PADDED GILET

Inspired by the urban fashion scene, the stylish gilet Maine is designed to dress trendy. Made from recycled materials and pleasantly padded with Sorona® Aura for efficient insulation and warmth, this lightweight bodywarmer becomes a perfect stand alone or comfortable layering piece.



**Outer fabric** 100% Recycled Pongee (Polyester) | **Lining** 100% Recycled Polyeste  
**Padding** Sorona® Aura & Recycled Sugentro®  
**Data** Water repellency finish - Bionic Finish® ECO  
**Colour** Black | **Weight** Outer fabric: 65g/m². Lining: 60g/m² | **Size** S - 3XL

BIONIC FINISH® ECO | SORONA® AURA | SUGENRO | RECYCLED FABRIC

Read more on page 244 -251





PLEASANTLY PADDED GILET

Inspired by the urban fashion scene, the stylish gilet Maine is designed to dress trendy. Made from recycled materials and pleasantly padded with Sorona® Aura for efficient insulation and warmth, this lightweight bodywarmer becomes a perfect stand alone or comfortable layering piece.

VESTS & GILETS

MAINE

WOMEN

NEW SS23



**Outer fabric** 100% Recycled Pongee (Polyester) | **Lining** 100% Recycled Polyeste

**Padding** Sorona® Aura & Recycled Sugentro®

**Data** Water repellency finish - Bionic Finish® ECO

**Colour** Black | **Weight** Outer fabric: 65g/m². Lining: 60g/m² | **Size** XS - 2XL





HORIZONTAL QUILTED GILET

A comfortable all-season bodywarmer made from recycled materials. The elegantly horizontal quilted Hudson gilet features classic design details and a Sorona® Aura padding for efficient insulation, warmth and a lightweight feel.

VESTS & GILETS

HUDSON

MEN

NEW SS23



**Outer fabric** 100% Recycled Pongee (Polyester) | **Lining** 100% Recycled Polyeste  
**Padding** Sorona® Aura & Recycled Sugentro®  
**Data** Water repellency finish - Bionic Finish® ECO  
**Colour** Dark Navy | **Weight** Outer fabric: 65g/m². Lining: 60g/m² | **Size** S - 3XL

BIONIC FINISH® ECO | SORONA® AURA | SUGENRO | RECYCLED FABRIC

Read more on page 244 -251





## HORIZONTAL QUILTED GILET

A comfortable all-season bodywarmer made from recycled materials. The elegantly horizontal quilted Hudson gilet features classic design details and a Sorona® Aura padding for efficient insulation, warmth and a lightweight feel.



VESTS & GILETS

# HUDSON

WOMEN

NEW SS23



**Outer fabric** 100% Recycled Pongee (Polyester) | **Lining** 100% Recycled Polyeste

**Padding** Sorona® Aura & Recycled Sugeno®

**Data** Water repellency finish - Bionic Finish® ECO

**Colour** Dark Navy | **Weight** Outer fabric: 65g/m². Lining: 60g/m² | **Size** XS - 2XL

BIONIC FINISH® ECO | SORONA® AURA | SUGENRO | RECYCLED FABRIC

Read more on page 244 -251





VERSATILE DOWN GILET

The Vermont body warmer is a true quality down product that not only offers warmth and protection to your core, but also allows freedom for movement which is popular for a variety of urban activities. This highly versatile piece of clothing can be worn to beat the chill on autumn days, and at the same time add an extra stylish dimension to your look.

VESTS & GILETS

VERMONT

MEN



**Outer fabric** 100% nylon | **Lining** 100% nylon

**Insulation** 90% duck down/ 10% duck feather, 700 Fill Power

**Data** Water repellency finish - Bionic Finish® ECO

**Colour** Black, Midnight Blue | **Weight** Shell: 35 g/m². Lining: 30 g/m² | **Size** S - 4XL

BIONIC FINISH® ECO | DOWN FEATHER

Read more on page 244 - 251





VERSATILE DOWN GILET

The Vermont body warmer is a true quality down product that not only offers warmth and protection to your core, but also allows freedom for movement which is popular for a variety of urban activities. This highly versatile piece of clothing can be worn to beat the chill on autumn days, and at the same time add an extra stylish dimension to your look.

VESTS & GILETS

VERMONT

WOMEN



**Outer fabric** 100% nylon | **Lining** 100% nylon

**Insulation** 90% duck down/ 10% duck feather, 700 Fill Power

**Data** Water repellency finish - Bionic Finish® ECO

**Colour** Black, Midnight Blue | **Weight** Shell: 35 g/m². Lining: 30 g/m² | **Size** XS - 3XL

BIONIC FINISH® ECO | DOWN FEATHER

Read more on page 244 -251





## Crossover *jackets*

Layer up in style with lighter outerwear

---

CRESCENT | HENDERSON | BELLINGTON | REDMOND  
BLEECKER | DAVENPORT | HUNTINGTON  
INDEPENDENCE | LINDENWOOD | BROOKHAVEN  
DUXBURY | RICHLAND | SEATTLE





CROSSOVER JACKETS

CRESCENT

MEN

NEW AW23



VERSATILE HYBRID JACKET

Bringing together a premium design complemented by our expertise in quality outerwear makes Crescent a versatile hybrid jacket, elegantly crafted for layering and transitional weather. With smoothly knitted sleeves, bonded with fleece, and strategically placed panels with padding in recycled polyester at the front body, this luxury hybrid jacket provides essential warmth where you need it most. Crescent is a versatile piece of outerwear that pairs nicely with both classic and more modern garments. Men’s version features a stand-up collar and women’s version has a feminine design with a low-cut collar.



**Outer fabric** Front shell: 100% Polyester. Sleeves & Back: 45% Recycled Polyester, 52% Polyester, 3% Elastane.  
**Front padding** 100% Recycled Polyester | **Lining** 100% Recycled Polyester | **Rib** 95% Polyester, 5% Elastane  
**Data** Quilt front: Water repellency finish - Bionic Finish® ECO. Windproof | **Colour** Navy  
**Weight** Quilt Shell: 78 g/m². Lining: 65 g/m². Sleeves & Back: 360 g/m². Rib: 750 g/m² | **Size** Men: S - 4XL

BIONIC FINISH® ECO | RECYCLED FABRIC

Read more on page 244 -251





VERSATILE HYBRID JACKET

Bringing together a premium design complemented by our expertise in quality outerwear makes Crescent a versatile hybrid jacket, elegantly crafted for layering and transitional weather. With smoothly knitted sleeves, bonded with fleece, and strategically placed panels with padding in recycled polyester at the front body, this luxury hybrid jacket provides essential warmth where you need it most. Crescent is a versatile piece of outerwear that pairs nicely with both classic and more modern garments. Men's version features a stand-up collar and women's version has a feminine design with a low-cut collar.

CROSSOVER JACKETS

CRESCENT

WOMEN

NEW AW23



**Outer fabric** Front shell: 100% Polyester. Sleeves & Back: 45% Recycled Polyester, 52% Polyester, 3% Elastane.  
**Front padding** 100% Recycled Polyester | **Lining** 100% Recycled Polyester | **Rib** 95% Polyester, 5% Elastane  
**Data** Quilt front: Water repellency finish - Bionic Finish® ECO. Windproof | **Colour** Navy  
**Weight** Quilt Shell: 78 g/m². Lining: 65 g/m². Sleeves & Back: 360 g/m². Rib: 750 g/m² | **Size** Women: XS - 3XL





STYLISH DIAMOND QUILTED JACKET

The stylish diamond quilted Henderson is the noble and sophisticated choice for everyday wear. Henderson's contemporary and aristocratic design combines traditional details with a highly comfortable fit. It is a true classic which is still to be found among many popular and well-known retail brands. The perfect combination of weather protective features and the lightweight Sorona® Aura fiber insulation, along with the many stylish and functional details, makes this jacket a versatile piece of outerwear in both men's and women's designs.

CROSSOVER JACKETS  
HENDERSON  
MEN



**Outer fabric** 100% nylon, diamond quilted | **Lining** 100% polyester  
**Padding** 100% polyester: Sorona® Aura | **Data** Water repellency finish - Bionic Finish® ECO  
**Colour** Midnight Blue | **Weight** Shell: 60 g/m². Lining: 60-65 g/m². Padding: 100 g/m²  
**Size** S - 4XL





STYLISH DIAMOND QUILTED JACKET

The stylish diamond quilted Henderson is the noble and sophisticated choice for everyday wear. Henderson's contemporary and aristocratic design combines traditional details with a highly comfortable fit. It is a true classic which is still to be found among many popular and well-known retail brands. The perfect combination of weather protective features and the lightweight Sorona® Aura fiber insulation, along with the many stylish and functional details, makes this jacket a versatile piece of outerwear in both men's and women's designs.

CROSSOVER JACKETS  
HENDERSON  
WOMEN



**Outer fabric** 100% nylon, diamond quilted | **Lining** 100% polyester  
**Padding** 100% polyester: Sorona® Aura | **Data** Water repellency finish - Bionic Finish® ECO  
**Colour** Midnight Blue | **Weight** Shell: 60 g/m². Lining: 60-65 g/m². Padding: 100 g/m²  
**Size** XS - 3XL





WARM BUSINESS JACKET

Bellington is a classic business jacket with a sharp appearance and Nimbus' signature detailing. Worn over a suit or with a more casual outfit, this jacket provides comfort and an elegant look that simply outshines similar jackets. Bellington is a versatile jacket suited to life both at the office and out on the town.

CROSSOVER JACKETS

BELLINGTON

MEN



**Outer fabric** 100% polyester pongee | **Lining** 100% polyester twill in Grey Melange, vertical quilted

**Data** Windproof. Water repellency finish - Bionic Finish® ECO

**Colour** Black | **Weight** Shell: 220 g/m². Lining: 40 g/m² | **Size** S - 4XL

BIONIC FINISH® ECO

Read more on page 244 -251





WARM BUSINESS JACKET

Bellington is a classic business jacket with a sharp appearance and Nimbus' signature detailing. Worn over a suit or with a more casual outfit, this jacket provides comfort and an elegant look that simply outshines similar jackets. Bellington is a versatile jacket suited to life both at the office and out on the town.

CROSSOVER JACKETS

BELLINGTON

WOMEN



**Outer fabric** 100% polyester pongee | **Lining** 100% polyester twill in Grey Melange, vertical quilted

**Data** Windproof. Water repellency finish - Bionic Finish® ECO

**Colour** Black | **Weight** Shell: 220 g/m². Lining: 40 g/m² | **Size** XS - 3XL

BIONIC FINISH® ECO

Read more on page 244 -251





### AUTHENTIC BOMBER JACKET

Bleecker is an authentic bomber jacket made from recycled polyester. Featuring classic design details, this vintage-inspired bomber jacket is cut in a regular fit and treated with a water-repellent finish - Bionic Finish® ECO. The cropped length along with the elegantly rounded neck and buttoned pockets states Bleecker as a fashionable jacket, wearable for any occasion.

CROSSOVER JACKETS

## BLEECKER

MEN

NEW SS23



**Outer fabric** 100% recycled Polyester Twill TPU 3K/3K | **Lining** 100% recycled Polyester Satin

**Data** Water resistance 3000mm. Breathability 3000g/m<sup>2</sup>/24h. Windproof.

Water repellency finish - Bionic Finish® ECO

**Colour** Dark Navy | **Weight** Outer fabric: 139g/m<sup>2</sup>. Lining: 70g/m<sup>2</sup> | **Size** S - 4XL

BIONIC FINISH® ECO | RECYCLED FABRIC

Read more on page 244 - 251





AUTHENTIC BOMBER JACKET

Bleecker is an authentic bomber jacket made from recycled polyester. Featuring classic design details, this vintage-inspired bomber jacket is cut in a regular fit and treated with a water-repellent finish - Bionic Finish® ECO. The cropped length along with the elegantly rounded neck and buttoned pockets states Bleecker as a fashionable jacket, wearable for any occasion.



CROSSOVER JACKETS

BLEECKER

WOMEN

NEW SS23



**Outer fabric** 100% recycled Polyester Twill TPU 3K/3K | **Lining** 100% recycled Polyester Satin

**Data** Water resistance 3000mm. Breathability 3000g/m²/24h. Windproof.

Water repellency finish - Bionic Finish® ECO

**Colour** Dark Navy | **Weight** Outer fabric: 139g/m². Lining: 70g/m² | **Size** XS - 3XL





TIMELESS ELEGANT JACKET

This is where style meets performance. Made for the stylish and connected explorer, this classic piece of elegant outerwear provides weather protective features as well as a comfortable fit. Davenport is a true cross-seasonal style that embraces comfort, functionality and design in one.

CROSSOVER JACKETS

DAVENPORT

MEN



**Outer fabric** 100% polyester twill | **Lining** 100% polyester | **Padding** 100% polyester  
**Rib** 97% polyester/ 3% elastane | **Data** Windproof. Water resistance 3000mm.  
Breathability 3000g/m²/24h. Critically taped seams. Water repellency finish - Bionic Finish® ECO  
**Colour** Black, Navy | **Weight** Shell: 139 g/m². Lining: 150 g/m² | **Size** S - 4XL

BIONIC FINISH® ECO

Read more on page 244 -251





TIMELESS ELEGANT JACKET

This is where style meets performance. Made for the stylish and connected explorer, this classic piece of elegant outerwear provides weather protective features as well as a comfortable fit. Davenport is a true cross-seasonal style that embraces comfort, functionality and design in one.

CROSSOVER JACKETS

DAVENPORT

WOMEN



**Outer fabric** 100% polyester twill | **Lining** 100% polyester | **Padding** 100% polyester  
**Rib** 97% polyester/ 3% elastane | **Data** Windproof. Water resistance 3000mm.  
Breathability 3000g/m²/24h. Critically taped seams. Water repellency finish - Bionic Finish® ECO  
**Colour** Black, Navy | **Weight** Shell: 139 g/m². Lining: 150 g/m² | **Size** XS - 3XL

BIONIC FINISH® ECO

Read more on page 244 -251





ELEGANT TECHNICAL JACKET

There is nothing more elegant than the combination of classic and aesthetic. Redmond is made for the stylish and contemporary metropolitan, looking for a classic piece of outerwear that provides weather protective features as well as a comfortable fit. This lightweight, breathable, wind and water repellent wind jacket is a true cross-seasonal style that embraces comfort, functionality and design in one. It is the perfect companion for unpredictable weather in between seasons. Women’s version is available in well-designed and feminine 3/4 length.

CROSSOVER JACKETS

REDMOND

MEN



**Outer fabric** 100% polyester twill. TPU membrane | **Lining** 100% polyester

**Data** Water repellency finish - Bionic Finish® ECO. Windproof. Water resistance 3000mm.

Breathability 3000g/m²/24h. Critically taped seams

**Colour** Black | **Weight** Shell: 139 g/m². Lining: 150 g/m² | **Size** S - 4XL

BIONIC FINISH® ECO

Read more on page 244 -251





ELEGANT TECHNICAL JACKET

There is nothing more elegant than the combination of classic and aesthetic. Redmond is made for the stylish and contemporary metropolitan, looking for a classic piece of outerwear that provides weather protective features as well as a comfortable fit. This lightweight, breathable, wind and water repellent wind jacket is a true cross-seasonal style that embraces comfort, functionality and design in one. It is the perfect companion for unpredictable weather in between seasons. Women’s version is available in well-designed and feminine 3/4 length.

CROSSOVER JACKETS

REDMOND

WOMEN



**Outer fabric** 100% polyester twill. TPU membrane | **Lining** 100% polyester

**Data** Water repellency finish - Bionic Finish® ECO. Windproof. Water resistance 3000mm.

Breathability 3000g/m²/24h. Critically taped seams

**Colour** Black | **Weight** Shell: 139 g/m². Lining: 150 g/m² | **Size** XS - 3XL

BIONIC FINISH® ECO

Read more on page 244 -251





## FASHIONABLE RAINCOAT

Huntington rain jacket is inspired by the trends and the Scandinavian design tradition. The classic rain jacket has become a part of the Nordic urban cityscape and therefore a natural part of Nimbus collection. The jacket is of course perfect for rainy weather as it is 100% waterproof due to welded seams, but the jacket is also an ideal choice for a trendier look.

CROSSOVER JACKETS

## HUNTINGTON

MEN



**Outer fabric** 100% PU with welded seams | **Data** Water resistance 3000mm

**Colour** Charcoal | **Weight** 200 g/m<sup>2</sup> | **Size** S - 4XL





FASHIONABLE RAINCOAT

Huntington rain jacket is inspired by the trends and the Scandinavian design tradition. The classic rain jacket has become a part of the Nordic urban cityscape and therefore a natural part of Nimbus collection. The jacket is of course perfect for rainy weather as it is 100% waterproof due to welded seams, but the jacket is also an ideal choice for a trendier look.

CROSSOVER JACKETS

HUNTINGTON

WOMEN



**Outer fabric** 100% PU with welded seams | **Data** Water resistance 3000mm  
**Colour** Charcoal | **Weight** 200 g/m<sup>2</sup> | **Size** XS - 3XL





## CLASSIC COACH JACKET

Marking our 25th anniversary as the style which indirectly kick-started Nimbus the Jacket Company back in 1995, the iconic "Independence" jacket is introduced to celebrate two decades of influential outerwear design. As every facet of 90's sportswear has been re-introduced or interpreted over the last years, the Coach jacket is no exception among cool streetwear and high-end fashion brands today.

CROSSOVER JACKETS

## INDEPENDENCE

UNISEX



**Outer fabric** 100% polyester. Water repellency finish | **Lining** 100% polyester mesh

**Data** Water repellency finish

**Colour** Navy | **Weight** Shell: 120 g/m<sup>2</sup>. Lining: 100 g/m<sup>2</sup> | **Size** XS - 2XL





## CLASSIC COACH JACKET

Marking our 25th anniversary as the style which indirectly kick-started Nimbus the Jacket Company back in 1995, the iconic "Independence" jacket is introduced to celebrate two decades of influential outerwear design. As every facet of 90's sportswear has been re-introduced or interpreted over the last years, the Coach jacket is no exception among cool streetwear and high-end fashion brands today.

CROSSOVER JACKETS

## INDEPENDENCE

UNISEX



**Outer fabric** 100% polyester. Water repellency finish | **Lining** 100% polyester mesh

**Data** Water repellency finish

**Colour** Navy | **Weight** Shell: 120 g/m<sup>2</sup>. Lining: 100 g/m<sup>2</sup> | **Size** XS - 2XL





URBAN STYLE QUILTED JACKET

Inspired by the urban fashion scene, Lindenwood offers a unique way of dressing casually while allowing a both raw a stylish appearance. Lindenwood is a water repellent and lightweight jacket made in a 100% recycled outer fabric and lining, and insulated with a Sorona® Aura padding, making it suitable for wearing all year. The popular vertical quilted look makes this jacket right for wearing with both elegant and more rugged outfits. Men's version feature a stand up collar and zipped pockets. The female version is designed in a 3/4 length featuring buttoned pockets and a low collar.

CROSSOVER JACKETS

LINDENWOOD

MEN

NEW SS23



**Outer fabric** 100% Recycled Pongee (Polyester) | **Lining** 100% Recycled Polyester  
**Padding** Sorona® Aura | **Data** Water repellency finish - Bionic Finish® ECO  
**Colour** Navy | **Weight** Outer fabric: 75g/m². Lining: 60-65 g/m² | **Size** S - 4XL

BIONIC FINISH® ECO | SORONA® AURA | RECYCLED FABRIC

Read more on page 244 -251





URBAN STYLE QUILTED JACKET

Inspired by the urban fashion scene, Lindenwood offers a unique way of dressing casually while allowing a both raw a stylish appearance. Lindenwood is a water repellent and lightweight jacket made in a 100% recycled outer fabric and lining, and insulated with a Sorona® Aura padding, making it suitable for wearing all year. The popular vertical quilted look makes this jacket right for wearing with both elegant and more rugged outfits. Men's version feature a stand up collar and zipped pockets. The female version is designed in a 3/4 length featuring buttoned pockets and a low collar.

CROSSOVER JACKETS  
LINDENWOOD  
WOMEN

NEW SS23



**Outer fabric** 100% Recycled Pongee (Polyester) | **Lining** 100% Recycled Polyester  
**Padding** Sorona® Aura | **Data** Water repellency finish - Bionic Finish® ECO  
**Colour** Navy | **Weight** Outer fabric: 75g/m². Lining: 60-65 g/m² | **Size** XS - 3XL

BIONIC FINISH® ECO | SORONA® AURA | RECYCLED FABRIC

Read more on page 244 -251





FASHIONABLE CROSSOVER JACKET

This is a light and quilted crossover, you want to have at hand at all times. Brookhaven is the ideal layering piece for between the seasons. Carry it along and wear it when in need of a bit of warmth and still in need of a crisp look. With this crossover you can start any day with ease and comfort.

CROSSOVER JACKETS

BROOKHAVEN

MEN



Outer fabric 100% nylon | Lining 100% nylon

Padding 100% polyester, quilted | Data Water repellency finish - Bionic Finish® ECO

Colour Midnight Blue | Weight Shell: 38 g/m². Lining: 38 g/m² | Size S - 4XL

BIONIC FINISH® ECO

Read more on page 244 -251





#### FASHIONABLE CROSSOVER JACKET

This is a light and quilted crossover, you want to have at hand at all times. Brookhaven is the ideal layering piece for between the seasons. Carry it along and wear it when in need of a bit of warmth and still in need of a crisp look. With this crossover you can start any day with ease and comfort.

#### CROSSOVER JACKETS

## BROOKHAVEN

#### WOMEN



**Outer fabric** 100% nylon | **Lining** 100% nylon

**Padding** 100% polyester, quilted | **Data** Water repellency finish - Bionic Finish® ECO

**Colour** Midnight Blue | **Weight** Shell: 38 g/m². Lining: 38 g/m² | **Size** XS - 3XL

BIONIC FINISH® ECO

Read more on page 244 -251





### FASHIONABLE PERFORMANCE SOFTSHELL JACKET

The Duxbury is a softshell jacket with an excellent fit made in a smooth and soft material, for those who are searching for a piece of modern outerwear. The elegant double stitches, upper arm zipper, semi covered side pockets and rubber wind placket behind the main zipper add unique value to the jacket, leaving room for pairing with many types of outfits.

### CROSSOVER JACKETS

## DUXBURY

### MEN



**Outer fabric** 95% polyester/ 5% elastane, Black, White and Navy. 100% polyester fleece, Grey  
**Lining** 100% polyester fisheye mesh | **Data** Water resistance 5000mm. Breathability 5000g/m<sup>2</sup>/24h  
performance membrane. Windproof. Water repellency finish - Bionic Finish® ECO  
**Colour** Black, Navy, Grey | **Weight** Shell: 270-280 g/m<sup>2</sup>. Lining body: 115 g/m<sup>2</sup> | **Size** S - 4XL

BIONIC FINISH® ECO

Read more on page 244 -251





FASHIONABLE PERFORMANCE SOFTSHELL JACKET

The Duxbury is a softshell jacket with an excellent fit made in a smooth and soft material, for those who are searching for a piece of modern outerwear. The elegant double stitches, upper arm zipper, semi covered side pockets and rubber wind placket behind the main zipper add unique value to the jacket, leaving room for pairing with many types of outfits.

CROSSOVER JACKETS

DUXBURY

WOMEN



**Outer fabric** 95% polyester/ 5% elastane, Black, White and Navy. 100% polyester fleece, Grey

**Lining** 100% polyester fisheye mesh | **Data** Water resistance 5000mm. Breathability 5000g/m²/24h performance membrane. Windproof. Water repellency finish - Bionic Finish® ECO

**Colour** Black, Navy, Grey | **Weight** Shell: 270-280 g/m². Lining body: 115 g/m² | **Size** XS - 3XL





PREMIUM BUSINESS BLAZER

Whether worn for work or festive moments, the Richland blazer makes a stylish statement no matter the occasion. The stretch element is key to the modern silhouette of this piece, making this jacket a comfortable everyday wear combined with your favorite shirt.

CROSSOVER JACKETS

**RICHLAND**

MEN



**Outer fabric** 53% polyester/ 43% wool/ 4% elastane | **Lining** 100% polyester  
**Colour** Navy | **Weight** 230 g/m² | **Size** 46 - 56 (S - 3XL)





#### PREMIUM BUSINESS BLAZER

Whether worn for work or festive moments, the Richland blazer makes a stylish statement no matter the occasion. The stretch element is key to the modern silhouette of this piece, making this jacket a comfortable everyday wear combined with your favorite shirt.

#### CROSSOVER JACKETS

### RICHLAND

#### WOMEN



**Outer fabric** 53% polyester/ 43% wool/ 4% elastane | **Lining** 100% polyester  
**Colour** Navy | **Weight** 230 g/m<sup>2</sup> | **Size** 36 - 46 (S - 3XL)





FUNCTIONAL BUSINESS JACKET

Made to last, this luxurious yet protective, clean-cut classic business coat features functional fabrics and decorative detailing. Although showing a minimalistic design, it has solid waterproof and breathable features, ensuring you stay dry whatever you are up to. If you enjoy a clean design, with functional pockets and taped seams, plus the comfort of a 3/4-length zipper hidden behind a protective wind placket, then this is the perfect answer to looking good on every day adventures.

CROSSOVER JACKETS

SEATTLE

MEN



**Outer fabric** 100% polyester twill. TPU membrane | **Lining** 100% polyester mesh

**Data** Water repellency finish - Bionic Finish® ECO. Windproof. Water resistance 3000mm.

Breathability 3000g/m²/24h. Critically taped seams

**Colour** Black | **Weight** Shell: 139 g/m². Lining: 65 g/m² | **Size** S - 4XL

BIONIC FINISH® ECO

Read more on page 244 -251





FUNCTIONAL BUSINESS JACKET

Made to last, this luxurious yet protective, clean-cut classic business coat features functional fabrics and decorative detailing. Although showing a minimalistic design, it has solid waterproof and breathable features, ensuring you stay dry whatever you are up to. If you enjoy a clean design, with functional pockets and taped seams, plus the comfort of a 3/4-length zipper hidden behind a protective wind placket, then this is the perfect answer to looking good on every day adventures.

CROSSOVER JACKETS

SEATTLE

WOMEN



**Outer fabric** 100% polyester twill. TPU membrane | **Lining** 100% polyester mesh

**Data** Water repellency finish - Bionic Finish® ECO. Windproof. Water resistance 3000mm.

Breathability 3000g/m²/24h. Critically taped seams

**Colour** Black | **Weight** Shell: 139 g/m². Lining: 65 g/m² | **Size** XS - 3XL

BIONIC FINISH® ECO

Read more on page 244 -251





## Insulated *jackets*

Embrace the elements with warm quality  
outerwear for any occasion

---

TELLURIDE | ABINGTON | FAIRVIEW  
KENDRICK | WHITESTONE | SIERRA  
STILLWATER | MAPLETON | NORTHDALÉ





INSULATED JACKETS

TELLURIDE

UNISEX

NEW AW23



CLASSIC DOWN EXPERIENCE

The exclusive Telluride down jacket is crafted to deliver fundamental warmth that won't weigh you down. With its classic and contemporary design, this luxurious down jacket supplies a stylish look and dependable protection in unpredictable weather conditions. Primarily made from recycled materials and filled with responsibly sourced down and feathers, this wind- and water-resistant jacket is made for those who enjoy an active look and a classic touch to their appearance.



**Outer fabric** 94% Recycled Polyester, 6% Spandex. TPU 10K/3K | **Lining** 100% Recycled Nylon  
**Filling** Down (90/10 Down/Feather) | **Data** Water resistance 10000 mm. Windproof.  
Breathability 3000 g/m<sup>2</sup>/24h. Water repellency finish - Bionic Finish® ECO.  
**Colour** Navy | **Weight** Shell: 145 g/m<sup>2</sup>. Lining: 38 g/m<sup>2</sup> | **Size** XS - 4XL

BIONIC FINISH® ECO | RECYCLED FABRIC

Read more on page 244 -251





INSULATED JACKETS

TELLURIDE

UNISEX

NEW AW23



CLASSIC DOWN EXPERIENCE

The exclusive Telluride down jacket is crafted to deliver fundamental warmth that won't weigh you down. With its classic and contemporary design, this luxurious down jacket supplies a stylish look and dependable protection in unpredictable weather conditions. Primarily made from recycled materials and filled with responsibly sourced down and feathers, this wind- and water-resistant jacket is made for those who enjoy an active look and a classic touch to their appearance.



**Outer fabric** 94% Recycled Polyester, 6% Spandex. TPU 10K/3K | **Lining** 100% Recycled Nylon  
**Filling** Down (90/10 Down/Feather) | **Data** Water resistance 10000 mm. Windproof.  
Breathability 3000 g/m<sup>2</sup>/24h. Water repellency finish - Bionic Finish® ECO.  
**Colour** Navy | **Weight** Shell: 145 g/m<sup>2</sup>. Lining: 38 g/m<sup>2</sup> | **Size** XS - 4XL

BIONIC FINISH® ECO | RECYCLED FABRIC

Read more on page 244 -251





## SUSTAINABLE ELEGANCE

Abington is a modern windproof and water repellent business jacket in 100% recycled Polyester Twill. With equally protective and sophisticated details, such as a detachable gilet-looking wind placket and a 100% Sorona® Aura padding, this sustainable piece of outerwear will keep you warm and stylish all season.

INSULATED JACKETS

## ABINGTON

MEN



**Outer fabric** 100% polyester - TPU 3K/3K | **Lining** 100% polyester

**Padding** 100% polyester: Sorona® Aura | **Data** Water resistance 3000 mm. Windproof.

Breathability 3000 g/m<sup>2</sup>/24h. Water repellency finish - Bionic Finish® ECO.

**Colour** Black | **Weight** Shell: 139 g/m<sup>2</sup>. Lining: 65 g/m<sup>2</sup> | **Size** S - 3XL

BIONIC FINISH® ECO | SORONA® AURA | RECYCLED FABRIC

Read more on page 244 -251





### SUSTAINABLE ELEGANCE

Abington is a modern windproof and water repellent business jacket in 100% recycled Polyester Twill. With equally protective and sophisticated details, such as a detachable gilet-looking wind placket and a 100% Sorona® Aura padding, this sustainable piece of outerwear will keep you warm and stylish all season.

INSULATED JACKETS

## ABINGTON

WOMEN



**Outer fabric** 100% polyester - TPU 3K/3K | **Lining** 100% polyester

**Padding** 100% polyester: Sorona® Aura | **Data** Water resistance 3000mm. Windproof.

Breathability 3000g/m²/24h. Water repellency finish - Bionic Finish® ECO.

**Colour** Black | **Weight** Shell: 139 g/m². Lining: 65 g/m² | **Size** XS - 2XL

BIONIC FINISH® ECO | SORONA® AURA | RECYCLED FABRIC

Read more on page 244 - 251





## WARM PERFORMANCE JACKET

Fairview is a highly technical winter jacket with a Sorona® Aura fiber padding that adds comfort and warmth without being bulky. It is a breathable, wind and waterproof piece of outerwear, very useful for commuting the urban scene. The contemporary and clean design combines traditional details with an uncompromising comfortable fit. Heavily supported by functional and weather protective features, such as taped seams, detachable hood, storm cuffs and a short extended back tail.

INSULATED JACKETS

## FAIRVIEW

MEN



**Outer fabric** 100% polyester with PU coating | **Lining** 100% polyester

**Padding** 100% polyester: Sorona® Aura | **Data** Windproof. Water repellency finish

- Bionic Finish® ECO. Water resistance 5000mm. Breathability 5000g/m²/24h

**Colour** Black | **Weight** Shell: 150 g/m². Lining: 65 g/m² | **Size** S - 4XL

BIONIC FINISH® ECO | SORONA® AURA | RECYCLED FABRIC

Read more on page 244 -251





WARM PERFORMANCE JACKET

Fairview is a highly technical winter jacket with a Sorona® Aura fiber padding that adds comfort and warmth without being bulky. It is a breathable, wind and waterproof piece of outerwear, very useful for commuting the urban scene. The contemporary and clean design combines traditional details with an uncompromising comfortable fit. Heavily supported by functional and weather protective features, such as taped seams, detachable hood, storm cuffs and a short extended back tail.



INSULATED JACKETS

FAIRVIEW

WOMEN



**Outer fabric** 100% polyester with PU coating | **Lining** 100% polyester  
**Padding** 100% polyester: Sorona® Aura | **Data** Windproof. Water repellency finish  
- Bionic Finish® ECO. Water resistance 5000mm. Breathability 5000g/m²/24h  
**Colour** Black | **Weight** Shell: 150 g/m². Lining: 65 g/m² | **Size** XS - 3XL

BIONIC FINISH® ECO | SORONA® AURA | RECYCLED FABRIC

Read more on page 244 -251





### FASHIONABLE QUILTET JACKET

With fashionable design details and warm keeping features, due to the Sorona® fiber that adds comfort and warmth without being bulky, Kendrick will become an all-time favorite. Worn as a standalone product this hybrid looking jacket will make your everyday life more comfortable and convenient when you're on the move. And thanks to the Nimbus zip-in function, this lightweight layer can easily be zipped into our weather protective jacket Whitestone.

INSULATED JACKETS

## KENDRICK

MEN



**Outer fabric** 100% polyester | **Lining** 100% polyester

**Padding** 100% polyester: Sorona® Aura | **Data** Water repellency finish - Bionic Finish® ECO

**Colour** Charcoal | **Weight** Shell: 70 g/m². Lining: 65 g/m² | **Size** S - 4XL

BIONIC FINISH® ECO | SORONA® AURA

Read more on page 244 - 251





FASHIONABLE QUILTET JACKET

With fashionable design details and warm keeping features, due to the Sorona® fiber that adds comfort and warmth without being bulky, Kendrick will become an all-time favorite. Worn as a standalone product this hybrid looking jacket will make your everyday life more comfortable and convenient when you're on the move. And thanks to the Nimbus zip-in function, this lightweight layer can easily be zipped into our weather protective jacket Whitestone.



INSULATED JACKETS

KENDRICK

WOMEN



**Outer fabric** 100% polyester | **Lining** 100% polyester  
**Padding** 100% polyester: Sorona® Aura | **Data** Water repellency finish - Bionic Finish® ECO  
**Colour** Charcoal | **Weight** Shell: 70 g/m², Lining: 65 g/m² | **Size** XS - 3XL

BIONIC FINISH® ECO | SORONA® AURA

Read more on page 244 -251





PERFORMANCE SHELL JACKET

This technical and weather protective jacket features Nimbus zip-in function, which allows you to zip in our warm keeping style Kendrick, giving you a complete functional winter jacket. The cutting-edge design and exclusive fabrics with taped seams, pushes the boundaries of modern styling and technical designs, to create a unique combination of a breathable, wind and waterproof yet fashionable piece of outerwear.

INSULATED JACKETS

WHITESTONE

MEN



**Outer fabric** 100% polyester with PU coating | **Lining** 100% polyester

**Data** Windproof. Water repellency finish - Bionic Finish® ECO

**Colour** Black | **Weight** Shell: 150 g/m². Lining: 65 g/m² | **Size** S - 4XL

BIONIC FINISH® ECO | RECYCLED FABRIC

Read more on page 244 -251





PERFORMANCE SHELL JACKET

This technical and weather protective jacket features Nimbus zip-in function, which allows you to zip in our warm keeping style Kendrick, giving you a complete functional winter jacket. The cutting-edge design and exclusive fabrics with taped seams, pushes the boundaries of modern styling and technical designs, to create a unique combination of a breathable, wind and waterproof yet fashionable piece of outerwear.

INSULATED JACKETS  
WHITESTONE  
WOMEN



**Outer fabric** 100% polyester with PU coating | **Lining** 100% polyester

**Data** Windproof. Water repellency finish - Bionic Finish® ECO

**Colour** Black | **Weight** Shell: 150 g/m². Lining: 65 g/m² | **Size** XS - 3XL

BIONIC FINISH® ECO | RECYCLED FABRIC

Read more on page 244 -251





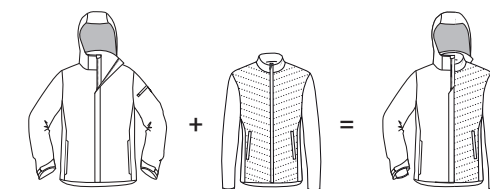
### VERSATILE ZIP-IN SYSTEM

With our Zip-In System you get perfect weather protection and maximum flexibility. The Zip-In system provides you with the opportunity to zip your wind and waterproof outer jacket together with other Nimbus products. Our 3-in-1 products are designed to be mutually compatible and can easily be worn individually as well as combined.

3 IN ONE

## ZIP-IN SYSTEM

MEN/WOMEN



KENDRICK PERFORMANCE INSULATION +  
WHITESTONE PERFORMANCE SHELL





PERFECT DOWN EXPERIENCE

Sierra is the latest generation of the channel down jacket. We have improved the quality and design in every possible way. Sierra still have the amazing properties of the down, and we have used the latest techniques and fabrics in order to improve it even further. Additionally, the design is updated with both new stylish wavy channels, contrast lining, and YKK Metalux zippers. All of which to give the jacket a more luxurious edge and style.



INSULATED JACKETS

SIERRA

MEN



**Outer fabric** 100% nylon | **Lining** 100% nylon

**Insulation** 90% duck down/ 10% duck feather, 700 Fill Power

**Data** Water repellency finish - Bionic Finish® ECO

**Colour** Black, Midnight Blue | **Weight** Shell: 35 g/m². Lining: 30 g/m² | **Size** S - 4XL

BIONIC FINISH® ECO | DOWN FEATHER

Read more on page 244 - 251





PERFECT DOWN EXPERIENCE

Sierra is the latest generation of the channel down jacket. We have improved the quality and design in every possible way. Sierra still have the amazing properties of the down, and we have used the latest techniques and fabrics in order to improve it even further. Additionally, the design is updated with both new stylish wavy channels, contrast lining, and YKK Metalux zippers. All of which to give the jacket a more luxurious edge and style.



INSULATED JACKETS

SIERRA  
WOMEN



**Outer fabric** 100% nylon | **Lining** 100% nylon

**Insulation** 90% duck down/ 10% duck feather, 700 Fill Power

**Data** Water repellency finish - Bionic Finish® ECO

**Colour** Black, Midnight Blue | **Weight** Shell: 35 g/m². Lining: 30 g/m² | **Size** XS - 3XL

BIONIC FINISH® ECO | DOWN FEATHER

Read more on page 244 -251





PREMIUM HYBRID DOWN JACKET

Sierra is the latest generation of the channel down jacket with improved quality and design in every possible way. Sierra has the amazing properties of the down combined with premium techniques and fabrics. Additionally, the stylish wavy channels, contrast lining and YKK Metalux zippers give the jacket a luxurious edge and style.



INSULATED JACKETS  
STILLWATER  
MEN



**Outer fabric** 100% nylon | **Lining** 100% nylon

**Insulation** 90% duck down/ 10% duck feather, 700 Fill Power

**Data** Water repellency finish - Bionic Finish® ECO | **Colour** Black

**Weight** Shell 1: 35 g/m², Shell 2: 266 g/m². Lining: 30 g/m² | **Size** S - 4XL

BIONIC FINISH® ECO | DOWN FEATHER

Read more on page 244 -251





#### PREMIUM HYBRID DOWN JACKET

Sierra is the latest generation of the channel down jacket with improved quality and design in every possible way. Sierra has the amazing properties of the down combined with premium techniques and fabrics. Additionally, the stylish wavy channels, contrast lining and YKK Metalux zippers give the jacket a luxurious edge and style.

INSULATED JACKETS

STILLWATER

WOMEN



**Outer fabric** 100% nylon | **Lining** 100% nylon

**Insulation** 90% duck down/ 10% duck feather, 700 Fill Power

**Data** Water repellency finish - Bionic Finish® ECO | **Colour** Black

**Weight** Shell 1: 35 g/m², Shell 2: 266 g/m². Lining: 30 g/m² | **Size** XS - 3XL

BIONIC FINISH® ECO | DOWN FEATHER

Read more on page 244 - 251



INSULATED JACKETS

MAPLETON

MEN



URBAN TECH PARKA JACKET

Mapleton is our all-winter style conscious parka jacket, filled with many clean and functional details that add elegance to a classic casual-business look. Equally protective and sophisticated, this jacket will keep you warm through the winter when wearing a minimalistic Scandinavian-inspired design on snow covered streets.



**Outer fabric** 100% polyester twill. TPU membrane | **Lining** 100% polyester  
**Padding** 100% polyester | **Data** Water repellency finish - Bionic Finish® ECO. Windproof.  
Water resistance 3000mm. Breathability 3000g/m²/24h. Critically taped seams  
**Colour** Black | **Weight** Shell: 139 g /m². Lining: 60-65 g/m² | **Size** S - 4XL

BIONIC FINISH® ECO

Read more on page 244 -251





URBAN TECH PARKA JACKET

Mapleton is our all-winter style conscious parka jacket, filled with many clean and functional details that add elegance to a classic casual-business look. Equally protective and sophisticated, this jacket will keep you warm through the winter when wearing a minimalistic Scandinavian-inspired design on snow covered streets.

INSULATED JACKETS

MAPLETON

WOMEN



**Outer fabric** 100% polyester twill. TPU membrane | **Lining** 100% polyester  
**Padding** 100% polyester | **Data** Water repellency finish - Bionic Finish® ECO. Windproof.  
Water resistance 3000mm. Breathability 3000g/m²/24h. Critically taped seams  
**Colour** Black | **Weight** Shell: 139 g /m². Lining: 60-65 g/m² | **Size** XS-3XL

BIONIC FINISH® ECO

Read more on page 244 -251





### FASHIONABLE WINTER JACKET

Northdale is our luxury winter jacket with several details that take the jacket in a more urban business direction, still with an elegantly refined design that characterizes a Nimbus product. The Northdale winter jacket is mainly crafted with sustainability in mind as both the shell fabric and the lovely warm Sugeno® padding are made from recycled polyester. The technical fabric with taped seams makes the jacket perfect for staying protected through the cold and windy winter months.

INSULATED JACKETS

## NORTHDALÉ

MEN



**Outer fabric** 100% Recycled polyester twill. TPU membrane | **Lining** 100% Recycled polyester

**Padding** 100% Recycled PET padding, Sugeno® (GRS) | **Data** Water repellency finish

- Bionic Finish® ECO. Windproof. Water resistance 3000mm. Breathability 3000g/m²/24h.

Critically taped seams | **Colour** Black | **Weight** 139 g/m² | **Size** S - 4XL

BIONIC FINISH® ECO | SUGENRO® | RECYCLED FABRIC

Read more on page 244 - 251





### FASHIONABLE WINTER JACKET

Northdale is our luxury winter jacket with several details that take the jacket in a more urban business direction, still with an elegantly refined design that characterizes a Nimbus product. The Northdale winter jacket is mainly crafted with sustainability in mind as both the shell fabric and the lovely warm Sugeno® padding are made from recycled polyester. The technical fabric with taped seams makes the jacket perfect for staying protected through the cold and windy winter months.

INSULATED JACKETS

## NORTHDALÉ

WOMEN



**Outer fabric** 100% Recycled polyester twill. TPU membrane | **Lining** 100% Recycled polyester

**Padding** 100% Recycled PET padding, Sugeno® (GRS) | **Data** Water repellency finish

- Bionic Finish® ECO. Windproof. Water resistance 3000mm. Breathability 3000g/m²/24h.

Critically taped seams | **Colour** Black | **Weight** 139 g/m² | **Size** XS - 3XL

BIONIC FINISH® ECO | SUGENRO® | RECYCLED FABRIC

Read more on page 244 -251



# SIZE GUIDE

## FINDING THE RIGHT SIZE

To ensure your complete satisfaction, we recommend that you check your measurements against our sizing chart to determine the right size for you. Make sure to measure directly on the body and then find your size in our size guide.

All measurements are in centimeters.

Feel free to contact our Customer Service at [customerservice@nimbusnordic.com](mailto:customerservice@nimbusnordic.com) if you have additional questions about our sizes.



## WOMEN

CM

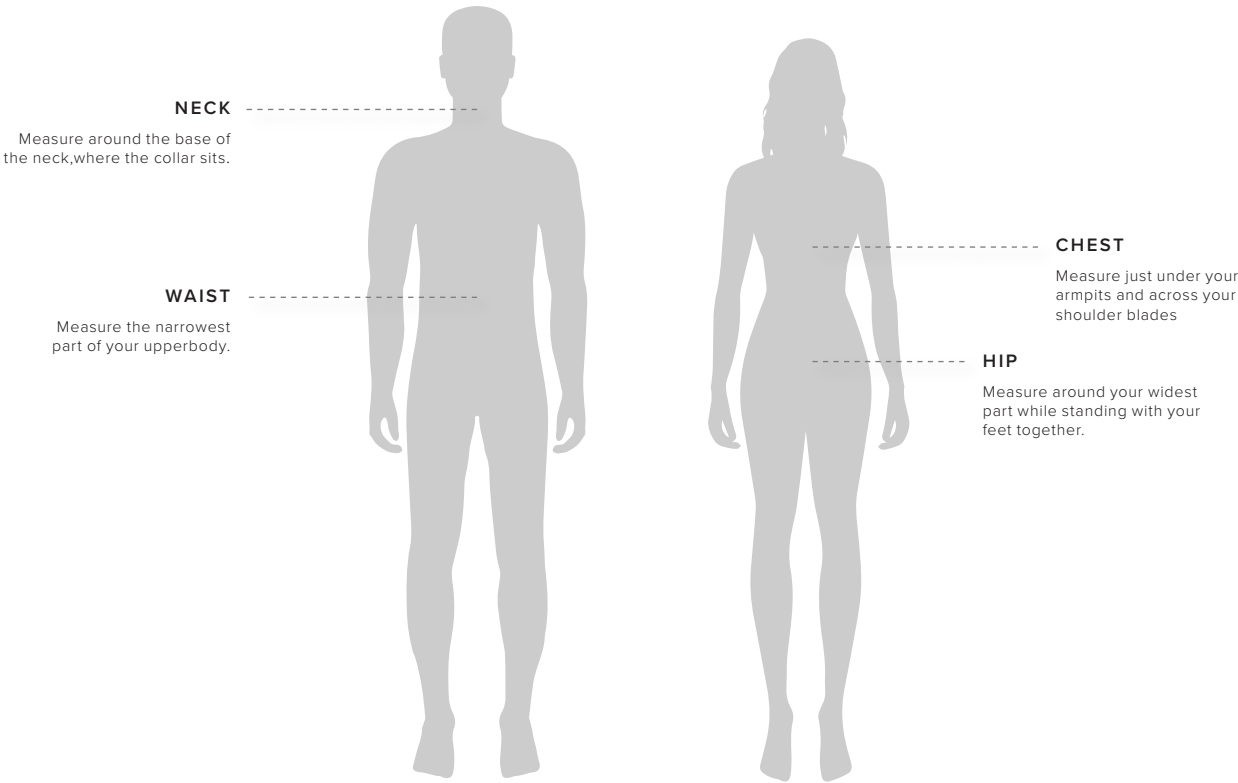
	EN / UK / US	EN / UK / US	EN / UK / US	EN / UK / US	EN / UK / US	EN / UK / US	EN / UK / US
	XS / 8 / 4	S / 10 / 6	M / 12 / 8	L / 14 / 10	XL / 16 / 12	2XL / 18 / 14	3XL / 20 / 16
CHEST	75-80	81-86	87-92	93-98	99-104	105-111	112-118
WAIST	59-64	65-70	71-76	77-82	83-88	89-95	96-103
HIP	83-88	89-94	96-101	102-107	108-113	114-120	121-127

## MEN

CM

	EN / UK + US	EN / UK + US	EN / UK + US	EN / UK + US	EN / UK + US	EN / UK + US	EN / UK + US
	S	M	L	XL	2XL	3XL	4XL
NECK	37/38	39/40	41/42	43/44	45/46	47/48	49/50
CHEST	90-95	96-101	102-107	108-113	114-119	120-125	126-131
WAIST	76-81	82-87	88-93	94-99	100-105	106-111	112-117
HIP	92-97	98-103	104-109	110-115	116-121	122-127	128-133

## HOW TO MEASURE







# NIMBUS ACADEMY

## WHAT IS NIMBUS ACADEMY?

Nimbus Academy is an education platform primarily targeted our sales force, external partners and our key customers. The goal is to expand the overall knowledge about the most interesting topics in our industry.



*A well-trained sales force*





# COTTON KNOWLEDGE

## HIGH QUALITY COTTON

We choose our cotton and its processing carefully to make sure we offer high quality cotton.



### LONG STAPLE COTTON

There are two broad groups of cotton; long staple cotton and shorter staple cotton. Long staple cotton yields extra-ordinary long fibres and is known for weaving strong, soft and durable high-quality fabrics due to its superior strength and uniformity.

The use of high quality long staple cotton in all our products is one of the reasons our cotton products stand out from the crowd.

### COMBED COTTON

Combed cotton is made by treating the cotton fibers before they are spun into yarn. The harvested cotton is applied on to fine brushes (the 'combs') to clean away impurities and any short fibers. Roughly 15% of the volume is removed this way, and leaves only long, straight fibers.

The slivers of combed cotton are then spun into thread. As a general rule, combed cotton is more expensive than conventional carded cotton.



### RING-SPUN COTTON

The yarn that is created for ring-spun cotton, is spun in a way that produces stronger and longer threads, as it is continuously twisted and thinned to make an extra-fine string of fibers.

During this process, the threads are compacted in a way that produces a very strong and durable material. The more times the fiber has been spun and twisted, the softer it feels. Open end yarn that is not ring-spun often result in a fabric with a rough texture.





# INSULATION KNOWLEDGE

## THERMAL INSULATION

Protection against cold is dependent upon thermal resistance or thermal insulation of the garment. Sorona® fibers provide high thermal insulation while retaining optimal warmth with less filling and weight, creating a more comfortable garment.

### SORONA® FIBER

At Nimbus we use top of the line materials in our products, and with Sorona® Aura we offer lightweight, breathable and warmth features with sustainability in mind.

Sorona® Aura fiber is an eco-efficient performance fiber. It is partially plant-based and can be recycled in any normal polyester recycling stream.

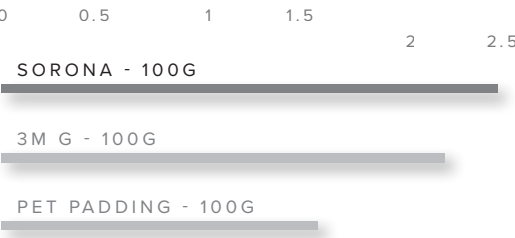
The main benefits for the consumer are seen over the life of the garments, as Sorona® based fabrics maintain a high level of stretch, recovery & colour fastness wash after wash.

### PATENTED TECHNOLOGY

Sorona® is produced with PDO, a building block with endlessly versatile potential, and using a biological process. 37% of the polymer is made using annually renewable plantbased ingredients. The revolutionary Bio-PDO compound turns a formerly chemical process into an eco-efficient biological one.

### INSULATION VALUE OF YOUR CLOTHING

50 % higher CLO value = Higher warmth than non branded insulation



LINDENWOOD







# MERINO BLEND KNOWLEDGE

## BIELLA YARN BY SÜDWOLLE

For our Merino wool blends, we have chosen Biella Yarn by Südwolle as our yarn supplier.



### MERINO WOOL

At Nimbus we use top of the line materials in Biella Yarn is the premium label of the family owned company Südwolle Group. The name refers to the town Biella in northern Italy, which has been leading the manufacturing of wool since the 1800s.

Biella Yarn offers some of the highest quality Merino yarns available on the market - spun from Merino wool, which is a finer and softer wool than regular wool and sourced from Merino sheep. Merino sheep has developed the softest and finest fleece, and with modern day spinning technology and fibre treatments, merino wool makes outstanding fabrics and final garments with both style, comfort and performance brought together in perfect harmony.

### OUR MERINO BLENDS

Südwolle has specialized in spinning, dyeing and blending wool with other fibres, and their yarns have the latest eco certifications including Bluesign and Oeko-Tex standards.

In our Nimbus merino blend program, the yarn is made of 50% Biella yarn and 50% anti-pilling acrylic which ensures that the knit keeps its fit. The fine merino blend gives the knit a soft, light and luxurious touch. Furthermore, the yarn is top-dyed, which means that the fibres are dyed before spinning the yarn - compared to yarn-dyed, where the yarn is dyed after spinning. This gives the yarn a super soft touch.

Biella Yarn

BY SÜDWOLLE







## MERINO CASHWOOL® KNOWLEDGE

### TOP QUALITY YARN FROM ZEGNA BARUFFA

For our 100% Merino cashwool® products, we have chosen Zegna Baruffa Lane Borgosesia as our yarn supplier.

#### MERINO WOOL

Products in 100% Merino wool are made in top-quality material. Merino Wool is a natural material shorn from Merino Sheep, which is a breed characterized by its very fine and soft wool – the thinner and soft fibres make Merino a premium material and one of the most popular, high-quality wools for knitwear. Merino has high levels of warmth, breathability and softness against the skin.

#### ZEGNA BARUFFA

Zegna Baruffa is a stamp of quality. The company Zegna Baruffa Lane Borgosesia is considered one of the leading spinners from the Biella area; Italy's wool capital. They offer some of the highest quality Merino yarns available on the market by combining manufacturing tradition with technological innovation and the value of Italianness with international perspectives. Sustainability is a central value within Zegna Baruffa, and through-out their history, they have won several awards for ethical and social practices. All their products are evaluated in compliance with the Reach regulation and are Oeko-Tex certified.







# DOWN KNOWLEDGE

## NATURAL INSULATION

Down is known for its impressive warmth-to-weight ratio, compressibility and overall comfort. In terms of warmth, nothing can rival down. Not even the best synthetics on the market that have been specifically engineered to simulate the qualities of down.



### WHAT IS DOWN?

Down is the layer of “feathers” that are closest to a bird’s body. Down is a very small part of the bird, growing as an undercoat on the belly and protected by a layer of feathers. Down is NOT the same as a feather. It has a completely different structure.



### DOWN FILL POWER

Fill power refers to the quality of down. Fill Power is simply a measurement of loft, measuring the amount of air trapped in cubic inches per 30 grams of down. Fill power does not refer to the amount of down used. The higher the number (800 fill, 700 fill, 600 fill etc.), the better the down and the more loft and warmth it will provide.

## NO LIVE PLUCKING

DOWN AND FEATHERS ARE NEVER  
REMOVED FROM LIVE BIRDS



We have a NON LIVE-PLUCKED Guarantee  
certificate from our down supplier.





# SUSTAINABILITY

## SUSTAINABILITY IS A KEY PRIORITY AT NIMBUS.

At Nimbus Nordic A/S we continuously take new steps to strengthen our practices and become even better at what we do.

One of our absolute key priorities is to design and create products with sustainability in mind.

We aim at minimizing the impact on the environment and protecting the well-being of future generations.

In order to live up to our CSR & Sustainability strategy, we are very selective about who we cooperate with. By using audits and assessment tools to select and monitor factories and by favouring fewer partners over many, we build long-lasting and close partnerships with our suppliers.

We strive to implement a sustainable and ethical approach throughout our complete supply chain, for example, all our products are covered by REACH\*, 93% of our styles are produced on Amfori\* audited factories, and many of our products have obtained product certifications, which are explained further on the following pages.

*\*REACH is a European Regulation concerning chemicals and their safe usage.*

*\*Amfori is the leading global business association for open and sustainable trade.*







# PRODUCT CERTIFICATIONS & STANDARDS

As a validation of our sustainability efforts, many of our products have obtained product certifications, and below we explain the different certifications and recognized logos. The list even includes some symbols we have designed ourselves to signal how a product has been made with sustainability in mind.



## OEKO-TEX® STANDARD 100

STANDARD 100 by OEKO-TEX® is one of the world's best-known labels for textiles tested for harmful substances. It stands for customer confidence and high product safety. Clothing manufactured under the principles of OEKO-TEX® meets requirements for pH value and content of harmful substances, such as pesticides and heavy metals.



## CERTIFIED ORGANIC COTTON

Organic cotton is cotton grown without the use of synthetic pesticides, artificial fertilizers, and other toxic chemicals. By law, organic cotton plants cannot come from genetically engineered seeds, and strict regulations dictate how cotton must be grown to be certified organic.

## CHANGING TO

We are currently working to improve our organic labelling, so our products comply with an even better, stricter, and more comprehensive standard called OCS.

## OCS

The Organic Content Standard (OCS) is an international, voluntary standard that provides chain of custody verification for materials originating on a farm certified to recognized national organic standards. The standard is used to verify organically grown raw materials from the farm to the final product.

## OCS 100

Applies to products made from at least 95% organic cotton mixed with conventional cotton or synthetics materials. The cotton used must be certified 100% organic.



## OCS BLENDED

Applies to products made with a minimum of 5% organic cotton mixed with conventional cotton or synthetics materials.







**SPANO NON-IRON TECHNOLOGY**

A softness of touch and ease of ironing have always been top priorities for us at Nimbus Nordic A/S, and we have applied a special treatment to our business shirts.

The Spano Advanced cotton technology takes non-iron a step further. With the SPANO Advanced cotton technology we are able to deliver Oekotex-certified fabrics for our non-iron shirts.

The "Advanced cotton" technology allows to influence the core of the fibres from inside themselves. And instead of using coventional methods, applying a chemical onto the finished product, this Inside Cross Linking technology results in an extremely high recovery and guaranteed flattening after wash. The joys of non-iron products are many.



**BIONIC FINISH® ECO**

BIONIC-FINISH® ECO represents an ecological technology and unique non-halogenated, APEO-free, fluorine-free formulations for permanent water repellent finishing. This ecological water-repellent impregnation offers a variety of consumer-friendly features such as rejecting water and aqueous soiling substances, being washable and suitable for all fiber types. It has the advantage of not having any negative effect on breathability, no fluorinated compounds and being formaldehyde free.







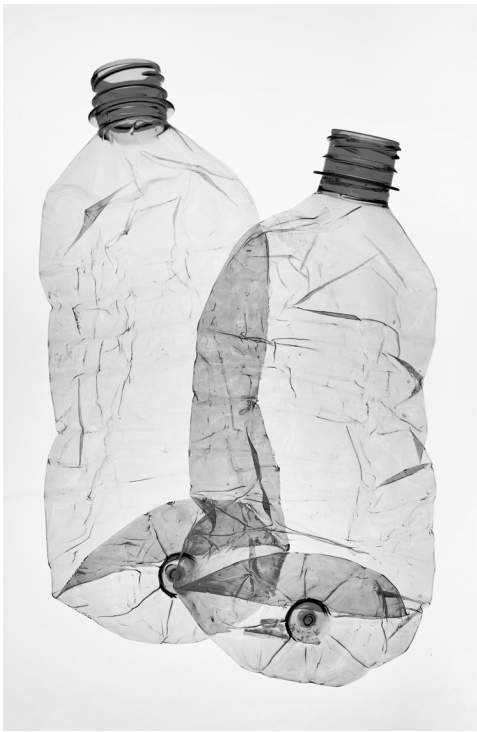
SUGENRO®

GRS approved Sugeno® fiber is made from recycled polyester and gives a padding which guarantees warmth and breathability, while being environmentally friendly.

MADE WITH  
**SUGENRO®**  
INSULATION

RECYCLED FABRIC

Recycled fabric uses mainly plastic bottles, packaging, fishing nets or textile waste as its raw material.





# QUALITY CONTROL

## MEETING INTERNATIONAL STANDARDS

We make sure to meet international standards by working with trusted partners, which function as global benchmark for quality and integrity.

Quality is essential for our brand and by simultaneously encouraging classic designs over innovative designs and simplifying future collections, we extend the life of our range and attempt to follow the philosophy of Slow Fashion.

As quality has our highest priority, all our productions are inspected locally by our own team or by third party agencies before shipped from production sites.

In China, we have our own facilities housing our loyal and valued col-leagues, who constantly monitor the product quality and factory performances.

Products that are made with a performance fabric/ membrane, adding features like Water Resistance or Breathability, are tested to make sure they meet the demands. Such styles are tested by third party laboratories according to international standards.



TOBBY / CHINA OFFICE MANAGER

### QIMA



QIMA represents a global leading quality control and compliance service provider, who se-cures, manages and optimizes the quality and compliance of our products and suppliers.

All auditors and inspectors of QIMA are managed by quality control and auditing specialists to ensure compliance with international standards.

### INTERTEK



Intertek delivers Total Quality Assurance solutions for textile products. Their compre-hensive services enable us to ensure quality and safety with precision.

At Nimbus we mainly use Intertek solutions for fabric and chemical testing.

### SGS



SGS is the world's leading inspection, verifi-cation, testing and certification company.

At Nimbus we use the services from SGS for both fabric-testing and third party inspections on productions.



# CODE OF CONDUCT

Our Code of Conduct lays out our principles, standards, and the moral and ethical expectations that our employees and third parties are held to as they interact with our organization.

Our Code of Conduct is a set of rules, principles, values, employee expectations, behaviours and relationships that we consider important and that summarize our commitment to sustainability.

We strive to make a positive difference to our social, environmental and economic responsibilities.



# 10

## TO FOLLOW

- 1

Nimbus will support and respect the protection of internationally proclaimed human rights.
- 2

Nimbus will make sure that they are not complicit in human rights abuses.
- 3

Nimbus will uphold the freedom of association and the effective recognition of the right to collective bargaining.
- 4

Nimbus supports the elimination of all forms of forced and compulsory labour.
- 5

Nimbus will support the effective abolition of child labour.
- 6

Nimbus will abolish discrimination in relation to work and employment conditions.
- 7

Nimbus will support a precautionary approach to environmental challenges.
- 8

Nimbus will support initiatives to promote greater environmental responsibility.
- 9

Nimbus will encourage the development and diffusion of environmentally friendly technologies.
- 10

Nimbus will work against corruption in all its forms, including extortion and bribery.



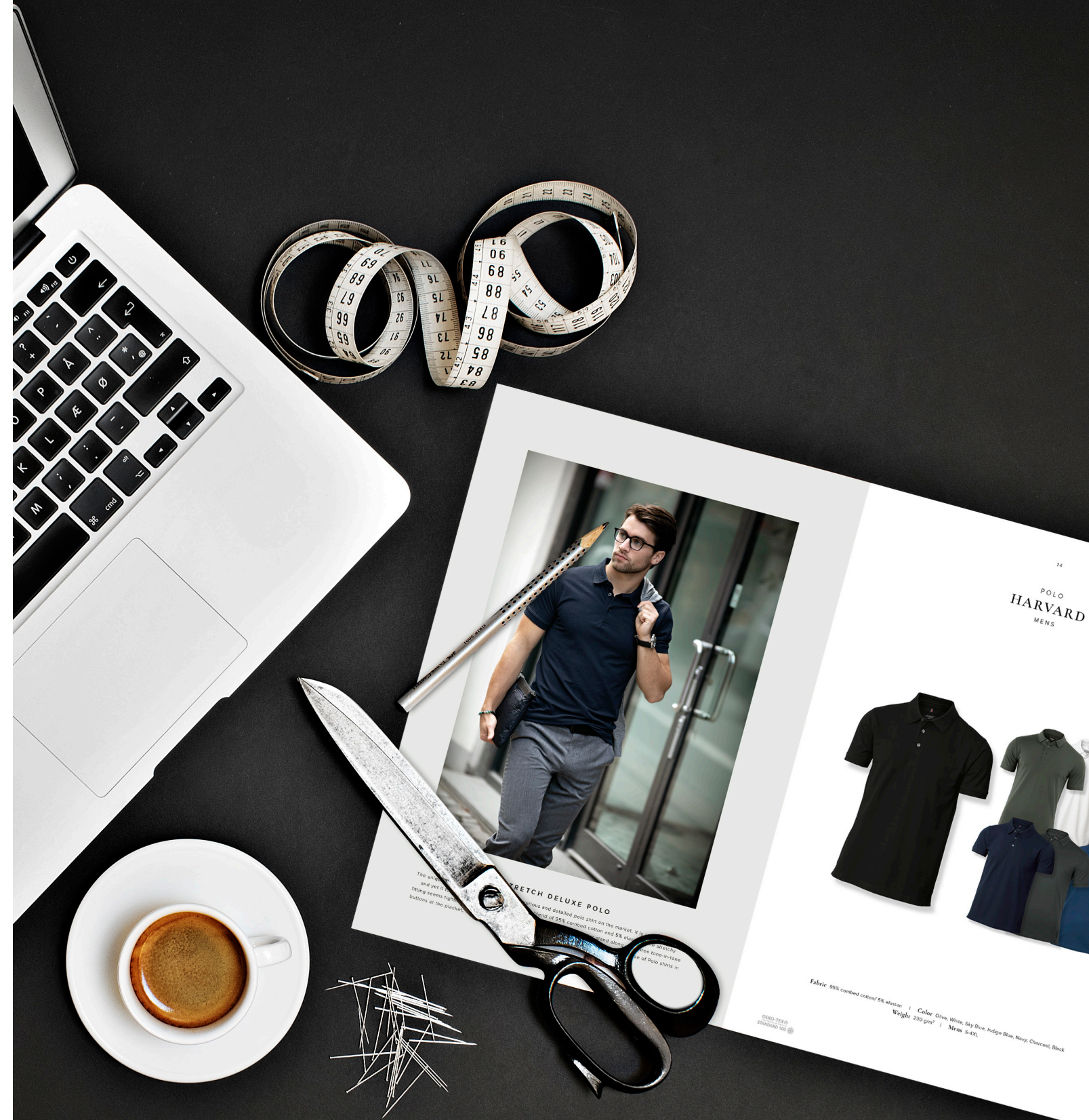
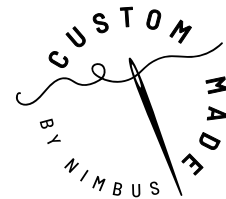
NIMBUS

## CUSTOM MADE

TO DIFFERENTIATE DOESN'T MEAN EXTRA  
HARD WORK FOR YOU – BUT FOR US

Let us be the creative force  
Let us add uniqueness to your brand  
Let us form your future products  
Let us guide you from experience

A wide range of products to chose from  
A proffesional team of great thinking minds  
Creative and modern designs







N  
NIMBUS®  
- CPH -

SCANDINAVIAN DESIGN & QUALITY